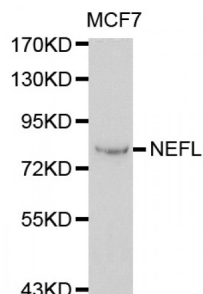


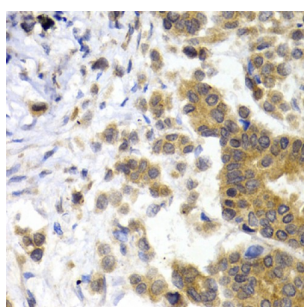
Abbexa Ltd, Innovation Centre, Cambridge Science Park, Cambridge, CB4 0EY, UK
Telephone: +44 (0) 1223 755950 - Fax: +44 (0) 1223 755951 - E-Mail: info@abbexa.com

Neurofilament, Light Polypeptide (NEFL) Antibody

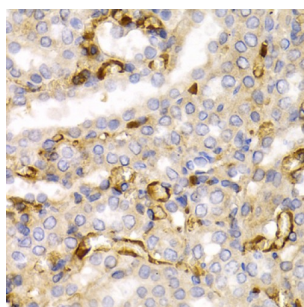
Catalogue No.: abx000642



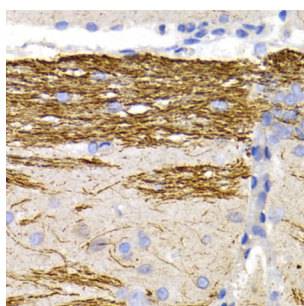
Western blot analysis of extracts of MCF-7 cells, using NEFL antibody (abx000642) at 1/1000 dilution.



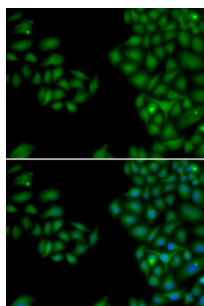
Immunohistochemistry of paraffin-embedded human breast cancer using NEFL antibody (abx000642) at dilution of 1/200 (40x lens).



Immunohistochemistry of paraffin-embedded rat kidney using NEFL antibody (abx000642) at dilution of 1/200 (40x lens).



Immunohistochemistry of paraffin-embedded rat brain using NEFL antibody (abx000642) at dilution of 1/200 (40x lens).



Immunofluorescence analysis of HeLa cells using NEFL antibody (abx000642). Blue: DAPI for nuclear staining.

NEFL Antibody is a Rabbit Polyclonal antibody against NEFL. Neurofilaments are type IV intermediate filament heteropolymers

Abbexa Ltd, Innovation Centre, Cambridge Science Park, Cambridge, CB4 0EY, UK
Telephone: +44 (0) 1223 755950 - Fax: +44 (0) 1223 755951 - E-Mail: info@abbexa.com

composed of light, medium, and heavy chains. Neurofilaments comprise the axoskeleton and they functionally maintain the neuronal caliber. They may also play a role in intracellular transport to axons and dendrites. This gene encodes the light chain neurofilament protein. Mutations in this gene cause Charcot-Marie-Tooth disease types 1F (CMT1F) and 2E (CMT2E), disorders of the peripheral nervous system that are characterized by distinct neuropathies. A pseudogene has been identified on chromosome Y.

Target: NEFL

Reactivity: Human, Mouse, Rat

Host: Rabbit

Clonality: Polyclonal

Tested Applications: WB, IHC, IF/ICC

Recommended dilutions: WB: 1/500 - 1/2000, IHC: 1/50 - 1/200, IF/ICC: 1/50 - 1/200. Optimal dilutions/concentrations should be determined by the end user.

Immunogen: Recombinant protein of human NEFL.

Purification: Affinity purified.

Form: Liquid

Isotype: IgG

Conjugation: Unconjugated

Storage: Aliquot and store at -20 °C. Avoid repeated freeze/thaw cycles.

Molecular Weight: Calculated MW: 61 kDa
Observed MW: 82 kDa

Swiss Prot: [P07196](#)

GeneID: [4747](#)

Gene Symbol: NEFL

Concentration: > 1 mg/ml

Buffer: PBS, pH 7.3, 0.02% sodium azide, 50% glycerol.

Note: This product is for research use only.