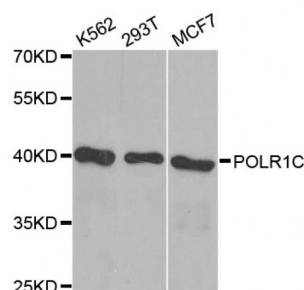


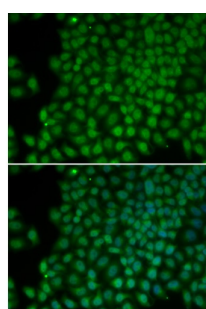
Abbexa Ltd, Innovation Centre, Cambridge Science Park, Cambridge, CB4 0EY, UK  
Telephone: +44 (0) 1223 755950 - Fax: +44 (0) 1223 755951 - E-Mail: [info@abbexa.com](mailto:info@abbexa.com)

## RNA Polymerase I Subunit C (POLR1C) Antibody

Catalogue No.: abx000654



Western blot analysis of extracts of various cell lines, using POLR1C antibody (abx000654) at 1/1000 dilution.



Immunofluorescence analysis of HeLa cells using POLR1C antibody (abx000654). Blue: DAPI for nuclear staining.

POLR1C Antibody is a Rabbit Polyclonal antibody against POLR1C. The protein encoded by this gene is a subunit of both RNA polymerase I and RNA polymerase III complexes. The encoded protein is part of the Pol core element. Defects in this gene have been associated with Treacher Collins syndrome (TCS).

**Target:** POLR1C

**Reactivity:** Human, Mouse, Rat

**Host:** Rabbit

**Clonality:** Polyclonal

**Tested Applications:** WB, IF/ICC

**Recommended dilutions:** WB: 1/500 - 1/2000, IF/ICC: 1/50 - 1/200. Optimal dilutions/concentrations should be determined by the end user.

**Immunogen:** Recombinant protein of human POLR1C.

**Purification:** Affinity purified.

**Form:** Liquid

**Isotype:** IgG

Abbexa Ltd, Innovation Centre, Cambridge Science Park, Cambridge, CB4 0EY, UK  
Telephone: +44 (0) 1223 755950 - Fax: +44 (0) 1223 755951 - E-Mail: [info@abbexa.com](mailto:info@abbexa.com)

|                          |   |
|--------------------------|---|
| <b>Conjugation:</b>      | Unconjugated  |
| <b>Storage:</b>          | Aliquot and store at -20 °C. Avoid repeated freeze/thaw cycles. |
| <b>Molecular Weight:</b> | Calculated MW: 38 kDa/39 kDa<br>Observed MW: 39 kDa             |
| <b>Swiss Prot:</b>       | <a href="#"><u>O15160</u></a>                                   |
| <b>GeneID:</b>           | <a href="#"><u>9533</u></a>                                     |
| <b>Gene Symbol:</b>      | POLR1C  |
| <b>Concentration:</b>    | > 1 mg/ml   |
| <b>Buffer:</b>           | PBS, pH 7.3, 0.02% sodium azide, 50% glycerol.                  |
| <b>Note:</b>             | This product is for research use only.                          |