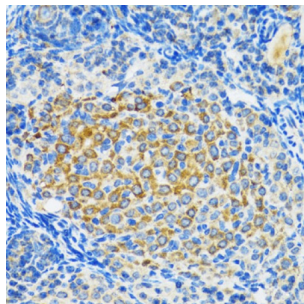


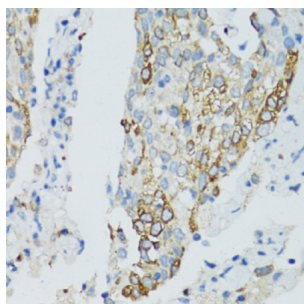
Abbexa Ltd, Innovation Centre, Cambridge Science Park, Cambridge, CB4 0EY, UK
Telephone: +44 (0) 1223 755950 - Fax: +44 (0) 1223 755951 - E-Mail: info@abbexa.com

Sirtuin 2 (SIRT2) Antibody

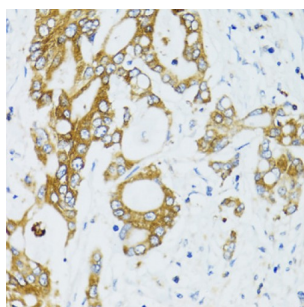
Catalogue No.: abx000658



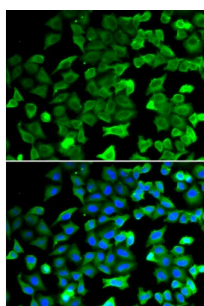
Immunohistochemistry of paraffin-embedded rat ovary using SIRT2 antibody (abx000658) at dilution of 1/100 (40x lens).



Immunohistochemistry of paraffin-embedded human lung cancer using SIRT2 antibody (abx000658) at dilution of 1/100 (40x lens).



Immunohistochemistry of paraffin-embedded human colon carcinoma using SIRT2 antibody (abx000658) at dilution of 1/100 (40x lens).



Immunofluorescence analysis of HeLa cells using SIRT2 antibody (abx000658). Blue: DAPI for nuclear staining.

SIRT2 Antibody is a Rabbit Polyclonal antibody against SIRT2. This gene encodes a member of the sirtuin family of proteins, homologs to the yeast Sir2 protein. Members of the sirtuin family are characterized by a sirtuin core domain and grouped into four classes. The functions of human sirtuins have not yet been determined; however, yeast sirtuin proteins are known to regulate epigenetic gene silencing and suppress recombination of rDNA. Studies suggest that the human sirtuins may function as intracellular regulatory proteins with mono-ADP-ribosyltransferase activity. The protein encoded by this gene is included in class I of the sirtuin family. Several transcript variants are resulted from alternative splicing of this gene.

Abbexa Ltd, Innovation Centre, Cambridge Science Park, Cambridge, CB4 0EY, UK
Telephone: +44 (0) 1223 755950 - Fax: +44 (0) 1223 755951 - E-Mail: info@abbexa.com

Target:	SIRT2
Reactivity:	Human, Rat
Host:	Rabbit
Clonality:	Polyclonal
Tested Applications:	WB, IHC, IF/ICC
Recommended dilutions:	WB: 1/500 - 1/2000, IHC: 1/50 - 1/200, IF/ICC: 1/10 - 1/100. Optimal dilutions/concentrations should be determined by the end user.
Immunogen:	Recombinant protein of human SIRT2.
Purification:	Affinity purified.
Form:	Liquid
Isotype:	IgG
Conjugation:	Unconjugated
Storage:	Aliquot and store at -20 °C. Avoid repeated freeze/thaw cycles.
Molecular Weight:	Calculated MW: 30 kDa/35 kDa/39 kDa/41 kDa/43 kDa Observed MW: Refer to Figures
Swiss Prot:	Q8IXJ6
GeneID:	22933
Gene Symbol:	SIRT2
Concentration:	> 1 mg/ml
Buffer:	PBS, pH 7.3, 0.02% sodium azide, 50% glycerol.
Note:	This product is for research use only.