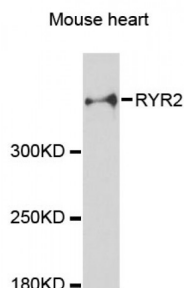


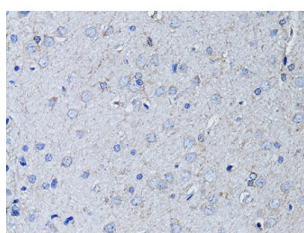
Abbexa Ltd, Innovation Centre, Cambridge Science Park, Cambridge, CB4 0EY, UK
Telephone: +44 (0) 1223 755950 - Fax: +44 (0) 1223 755951 - E-Mail: info@abbexa.com

Ryanodine Receptor 2 (RYR2) Antibody

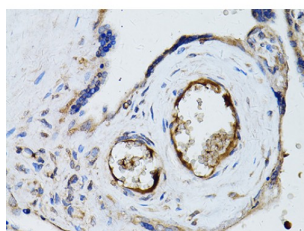
Catalogue No.: abx000677



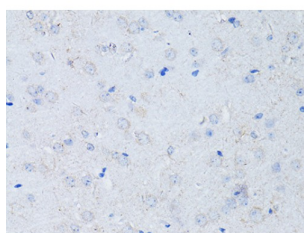
Western blot analysis of extracts of mouse heart, using RYR2 antibody (abx000677) at 1:3000 dilution.



Immunohistochemistry of paraffin-embedded rat brain using RYR2 Antibody (abx000677) at dilution of 1/100 (40x lens).



Immunohistochemistry of paraffin-embedded human placenta using RYR2 Antibody (abx000677) at dilution of 1/100 (40x lens).



Immunohistochemistry of paraffin-embedded mouse brain using RYR2 Antibody (abx000677) at dilution of 1/100 (40x lens).

RYR2 Antibody is a Rabbit Polyclonal antibody against RYR2. RYR2 belongs to the ryanodine receptor family. RYR2 provides communication between transverse-tubules and sarcoplasmic reticulum. Contraction of cardiac muscle is triggered by release of calcium ions from SR following depolarization of T-tubules. Defects in RYR2 are the cause of familial arrhythmogenic right ventricular dysplasia type 2 (ARVD2) which known as arrhythmogenic right ventricular cardiomyopathy 2 (ARVC2). Defects in RYR2 are the cause of catecholaminergic polymorphic ventricular tachycardia type 1 (CPVT1) which known as stress-induced polymorphic ventricular tachycardia (VTSP). This gene encodes a ryanodine receptor found in cardiac muscle sarcoplasmic reticulum. The encoded protein is one of the components of a calcium channel, composed of a tetramer of the ryanodine receptor proteins and a tetramer of FK506 binding protein 1B proteins, that supplies calcium to cardiac muscle. Mutations in this gene are associated with stress-induced polymorphic ventricular tachycardia and arrhythmogenic right ventricular dysplasia.

Abbexa Ltd, Innovation Centre, Cambridge Science Park, Cambridge, CB4 0EY, UK
Telephone: +44 (0) 1223 755950 - Fax: +44 (0) 1223 755951 - E-Mail: info@abbexa.com

[provided by RefSeq, Jul 2008].

Target: RYR2

Reactivity: Human, Mouse, Rat

Host: Rabbit

Clonality: Polyclonal

Tested Applications: WB, IHC

Recommended dilutions: WB: 1/500 - 1/2000, IHC: 1/50 - 1/200. Optimal dilutions/concentrations should be determined by the end user.

Immunogen: A synthetic peptide of human RYR2.

Purification: Affinity purified.

Form: Liquid

Isotype: IgG

Conjugation: Unconjugated

Storage: Aliquot and store at -20 °C. Avoid repeated freeze/thaw cycles.

Molecular Weight: Calculated MW: 564 kDa/565 kDa
Observed MW: 500 kDa

Swiss Prot: [Q92736](#)

GeneID: [6262](#)

Gene Symbol: RYR2

Concentration: > 1 mg/ml

Buffer: PBS, pH 7.3, 0.02% sodium azide, 50% glycerol.

Note: This product is for research use only.