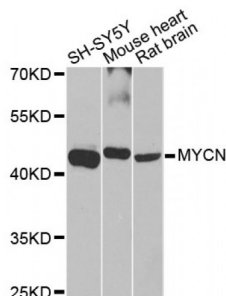


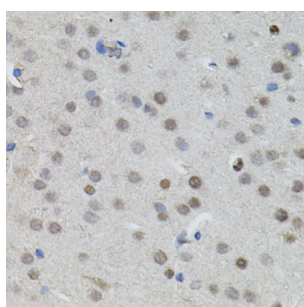
Abbexa Ltd, Innovation Centre, Cambridge Science Park, Cambridge, CB4 0EY, UK
Telephone: +44 (0) 1223 755950 - Fax: +44 (0) 1223 755951 - E-Mail: info@abbexa.com

N-Myc Proto-Oncogene Protein (MYCN) Antibody

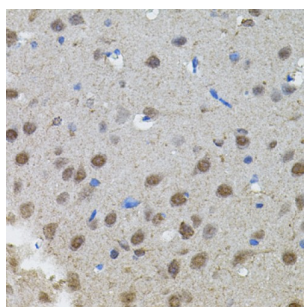
Catalogue No.: abx000732



Western blot analysis of extracts of various cell lines, using MYCN antibody (abx000732) at 1/1000 dilution.



Immunohistochemistry of paraffin-embedded mouse brain using MYCN antibody (abx000732) (40x lens).



Immunohistochemistry of paraffin-embedded rat brain using MYCN antibody (abx000732) (40x lens).

MYCN Antibody is a Rabbit Polyclonal antibody against MYCN. MYCN, also named as BHLHE37 and NMYC, is a transcription factor. It is primarily expressed in normal developing embryos and is thought to be critical in brain and other neural development. It is often amplified in human neuroblastomas. IR34A can suppress MYCN expression, it suggest MYCN has a role in cell growth. The expression of the MCYN is upregulated in a variety of human tumors, most requently neuroblastoma, where the level of expression appearts to increase as teh tumor progress.

Target: MYCN

Reactivity: Human, Mouse, Rat

Host: Rabbit

Clonality: Polyclonal

Tested Applications: WB, IHC

Abbexa Ltd, Innovation Centre, Cambridge Science Park, Cambridge, CB4 0EY, UK
Telephone: +44 (0) 1223 755950 - Fax: +44 (0) 1223 755951 - E-Mail: info@abbexa.com

Recommended dilutions: WB: 1/500 - 1/2000, IHC: 1/50 - 1/200. Optimal dilutions/concentrations should be determined by the end user.

Immunogen: Recombinant protein of human MYCN.

Purification: Affinity purified.

Form: Liquid

Isotype: IgG

Conjugation: Unconjugated

Storage: Aliquot and store at -20 °C. Avoid repeated freeze/thaw cycles.

Molecular Weight: Calculated MW: 49 kDa
Observed MW: 45 kDa

Swiss Prot: [P04198](#)

GeneID: [4613](#)

Gene Symbol: MYCN

Concentration: > 1 mg/ml

Buffer: PBS, pH 7.3, 0.02% sodium azide, 50% glycerol.

Note: This product is for research use only.