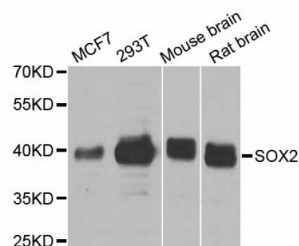


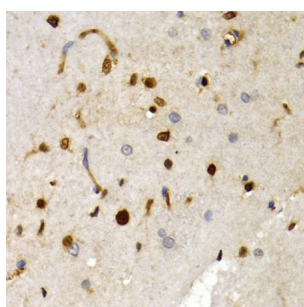
Abbexa Ltd, Innovation Centre, Cambridge Science Park, Cambridge, CB4 0EY, UK
Telephone: +44 (0) 1223 755950 - Fax: +44 (0) 1223 755951 - E-Mail: info@abbexa.com

Sex Determining Region Y Box Protein 2 (SOX2) Antibody

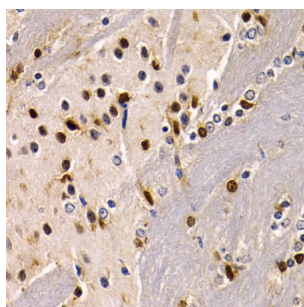
Catalogue No.: abx000763



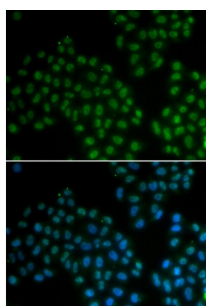
Western blot analysis of extracts of various cell lines, using SOX2 antibody (abx000763) at 1/1000 dilution.



Immunohistochemistry of paraffin-embedded rat brain using SOX2 antibody (abx000763) at dilution of 1/200 (40x lens).



Immunohistochemistry of paraffin-embedded mouse brain using SOX2 antibody (abx000763) at dilution of 1/200 (40x lens).



Immunofluorescence analysis of A549 cells using SOX2 antibody (abx000763).

SOX2 Antibody is a Rabbit Polyclonal antibody against SOX2. This intronless gene encodes a member of the SRY-related HMG-box (SOX) family of transcription factors involved in the regulation of embryonic development and in the determination of cell fate. The product of this gene is required for stem-cell maintenance in the central nervous system, and also regulates gene expression in the stomach. Mutations in this gene have been associated with optic nerve hypoplasia and with syndromic microphthalmia, a severe form of structural eye malformation. This gene lies within an intron of another gene called SOX2 overlapping transcript (SOX2OT).

Abbexa Ltd, Innovation Centre, Cambridge Science Park, Cambridge, CB4 0EY, UK
Telephone: +44 (0) 1223 755950 - Fax: +44 (0) 1223 755951 - E-Mail: info@abbexa.com

Target:	SOX2
Reactivity:	Human, Mouse, Rat
Host:	Rabbit
Clonality:	Polyclonal
Tested Applications:	WB, IHC, IF/ICC
Recommended dilutions:	WB: 1/500 - 1/2000, IHC: 1/50 - 1/200, IF/ICC: 1/50 - 1/200. Optimal dilutions/concentrations should be determined by the end user.
Immunogen:	Recombinant protein of human SOX2.
Purification:	Affinity purified.
Form:	Liquid
Isotype:	IgG
Conjugation:	Unconjugated
Storage:	Aliquot and store at -20 °C. Avoid repeated freeze/thaw cycles.
Molecular Weight:	Calculated MW: 34 kDa Observed MW: 39 kDa
Swiss Prot:	P48431
GeneID:	6657
Gene Symbol:	SOX2
Concentration:	> 1 mg/ml
Buffer:	PBS, pH 7.3, 0.02% sodium azide, 50% glycerol.
Note:	This product is for research use only.