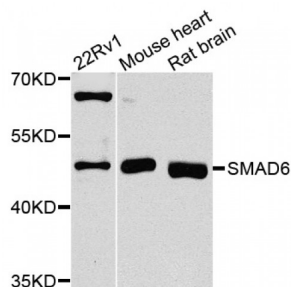


Abbexa Ltd, Innovation Centre, Cambridge Science Park, Cambridge, CB4 0EY, UK
Telephone: +44 (0) 1223 755950 - Fax: +44 (0) 1223 755951 - E-Mail: info@abbexa.com

Mothers Against Decapentaplegic Homolog 6 (SMAD6) Antibody

Catalogue No.: abx000769



Western blot analysis of extracts of various cell lines, using SMAD6 antibody (abx000769) at 1/1000 dilution.

SMAD6 Antibody is a Rabbit Polyclonal antibody against SMAD6. The protein encoded by this gene belongs to the SMAD family of proteins, which are related to *Drosophila* 'mothers against decapentaplegic' (Mad) and *C. elegans* Sma. SMAD proteins are signal transducers and transcriptional modulators that mediate multiple signaling pathways. This protein functions in the negative regulation of BMP and TGF-beta/activin-signalling. Multiple transcript variants encoding different isoforms have been found for this gene.

Target: SMAD6

Reactivity: Human, Mouse, Rat

Host: Rabbit

Clonality: Polyclonal

Tested Applications: WB

Recommended dilutions: WB: 1/500 - 1/1000. Optimal dilutions/concentrations should be determined by the end user.

Immunogen: A synthetic peptide of human SMAD6.

Purification: Affinity purified.

Form: Liquid

Isotype: IgG

Conjugation: Unconjugated

Storage: Aliquot and store at -20 °C. Avoid repeated freeze/thaw cycles.

Molecular Weight: Calculated MW: 26 kDa/35 kDa/53 kDa
Observed MW: 48 kDa

Abbexa Ltd, Innovation Centre, Cambridge Science Park, Cambridge, CB4 0EY, UK
Telephone: +44 (0) 1223 755950 - Fax: +44 (0) 1223 755951 - E-Mail: info@abbexa.com

Swiss Prot: [O43541](#)

GeneID: [4091](#)

Gene Symbol: SMAD6

Concentration: > 1 mg/ml

Buffer: PBS, pH 7.3, 0.02% sodium azide, 50% glycerol.

Note: This product is for research use only.