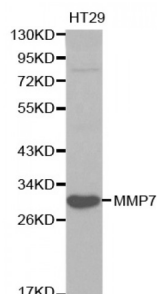


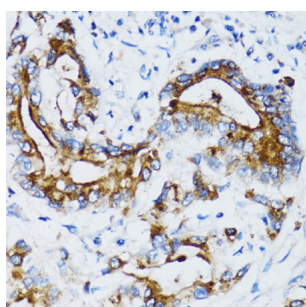
Abbexa Ltd, Innovation Centre, Cambridge Science Park, Cambridge, CB4 0EY, UK
Telephone: +44 (0) 1223 755950 - Fax: +44 (0) 1223 755951 - E-Mail: info@abbexa.com

Matrix Metalloproteinase-7 (MMP7) Antibody

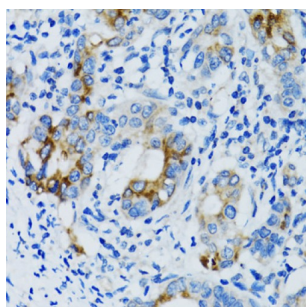
Catalogue No.: abx000830



Western blot analysis of extracts of HT-29 cells, using MMP7 antibody (abx000830) at 1/1000 dilution.



Immunohistochemistry of paraffin-embedded human colon carcinoma using MMP7 antibody (abx000830) at dilution of 1/100 (40x lens).



Immunohistochemistry of paraffin-embedded human gastric cancer using MMP7 antibody (abx000830) at dilution of 1/100 (40x lens).

MMP7 Antibody is a Rabbit Polyclonal antibody against MMP7. Proteins of the matrix metalloproteinase (MMP) family are involved in the breakdown of extracellular matrix in normal physiological processes, such as embryonic development, reproduction, and tissue remodeling, as well as in disease processes, such as arthritis and metastasis. Most MMP's are secreted as inactive proproteins which are activated when cleaved by extracellular proteinases. The enzyme encoded by this gene degrades proteoglycans, fibronectin, elastin and casein and differs from most MMP family members in that it lacks a conserved C-terminal protein domain. The enzyme is involved in wound healing, and studies in mice suggest that it regulates the activity of defensins in intestinal mucosa. The gene is part of a cluster of MMP genes which localize to chromosome 11q22.3.

Target: Matrix Metalloproteinase 7 (MMP7)

Reactivity: Human, Mouse, Rat

Host: Rabbit

Clonality: Polyclonal

Abbexa Ltd, Innovation Centre, Cambridge Science Park, Cambridge, CB4 0EY, UK
Telephone: +44 (0) 1223 755950 - Fax: +44 (0) 1223 755951 - E-Mail: info@abbexa.com

Tested Applications:	WB, IHC
Recommended dilutions:	WB: 1/500 - 1/2000, IHC: 1/50 - 1/200. Optimal dilutions/concentrations should be determined by the end user.
Immunogen:	Recombinant protein of human MMP7.
Purification:	Affinity purified.
Form:	Liquid
Isotype:	IgG
Conjugation:	Unconjugated
Storage:	Aliquot and store at -20 °C. Avoid repeated freeze/thaw cycles.
Molecular Weight:	Calculated MW: 29 kDa Observed MW: 30 kDa
Swiss Prot:	P09237
GeneID:	4316
Gene Symbol:	MMP7
Enzyme Commission Number:	EC 3.4.24.23:::EC 3.4.24
Concentration:	> 1 mg/ml
Buffer:	PBS, pH 7.3, 0.02% sodium azide, 50% glycerol.
Note:	This product is for research use only.