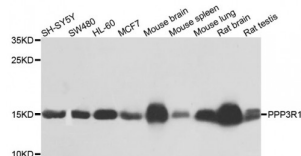


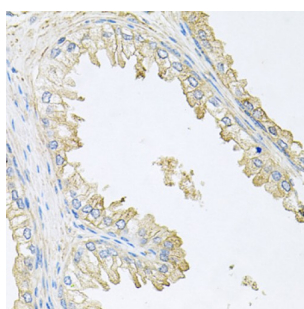
Abbexa Ltd, Innovation Centre, Cambridge Science Park, Cambridge, CB4 0EY, UK  
Telephone: +44 (0) 1223 755950 - Fax: +44 (0) 1223 755951 - E-Mail: [info@abbexa.com](mailto:info@abbexa.com)

## Calcineurin Subunit B Type 1 (PPP3R1) Antibody

Catalogue No.: abx000913



Western blot analysis of extracts of various cell lines, using PPP3R1 antibody (abx000913) at 1/1000 dilution.



Immunohistochemistry of paraffin-embedded human prostate using PPP3R1 antibody (abx000913) at dilution of 1/100 (40x lens).

PPP3R1 Antibody is a Rabbit Polyclonal antibody against PPP3R1. Protein phosphatase 3 (PPP3, formerly PP2B, Calcineurin), a serine/ threonine protein phosphatase, is a heterodimer composed of one catalytic subunit (PPP3C, Calcineurin A) and one regulatory subunit (PPP3R, Calcineurin B). PPP3R has two isoforms, PPP3R1 and PPP3R2. PPP3R1 is ubiquitously expressed in different tissues and is coded by the PPP3R1 gene which was mapped recently to human chromosome 2. PPP3R1 has four functional calcium-binding sites.

<b>Target:</b>	PPP3R1
<b>Reactivity:</b>	Human, Mouse, Rat
<b>Host:</b>	Rabbit
<b>Clonality:</b>	Polyclonal
<b>Tested Applications:</b>	WB, IHC
<b>Recommended dilutions:</b>	WB: 1/500 - 1/2000, IHC: 1/50 - 1/100. Optimal dilutions/concentrations should be determined by the end user.
<b>Immunogen:</b>	Recombinant protein of human PPP3R1.
<b>Purification:</b>	Affinity purified.
<b>Form:</b>	Liquid

Abbexa Ltd, Innovation Centre, Cambridge Science Park, Cambridge, CB4 0EY, UK  
Telephone: +44 (0) 1223 755950 - Fax: +44 (0) 1223 755951 - E-Mail: [info@abbexa.com](mailto:info@abbexa.com)

<b>Isotype:</b>	IgG
<b>Conjugation:</b>	Unconjugated
<b>Storage:</b>	Aliquot and store at -20 °C. Avoid repeated freeze/thaw cycles.
<b>Molecular Weight:</b>	Calculated MW: 19 kDa Observed MW: 15 kDa
<b>Swiss Prot:</b>	<a href="#">P63098</a>
<b>GeneID:</b>	<a href="#">5534</a>
<b>Gene Symbol:</b>	PPP3R1
<b>Concentration:</b>	> 1 mg/ml
<b>Buffer:</b>	PBS, pH 7.3, 0.02% sodium azide, 50% glycerol.
<b>Note:</b>	This product is for research use only.