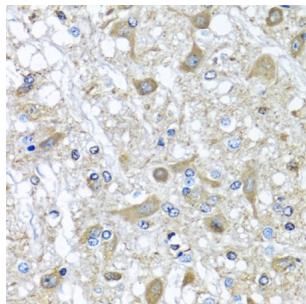


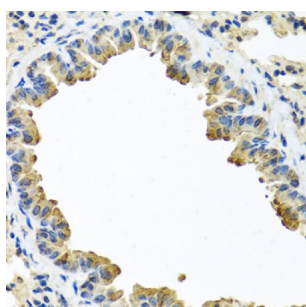
Abbexa Ltd, Innovation Centre, Cambridge Science Park, Cambridge, CB4 0EY, UK
Telephone: +44 (0) 1223 755950 - Fax: +44 (0) 1223 755951 - E-Mail: info@abbexa.com

Serpin Family A Member 3 (SERPINA3) Antibody

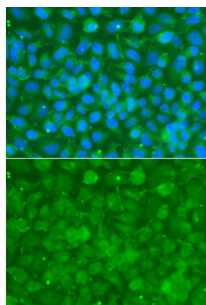
Catalogue No.: abx000963



Immunohistochemistry of paraffin-embedded rat brain using SERPINA3 antibody (abx000963) at dilution of 1/100 (40x lens).



Immunohistochemistry of paraffin-embedded mouse lung using SERPINA3 antibody (abx000963) at dilution of 1/100 (40x lens).



Immunofluorescence analysis of A549 cells using SERPINA3 antibody (abx000963). Blue: DAPI for nuclear staining.

SERPINA3 Antibody is a Rabbit Polyclonal antibody against SERPINA3. The protein encoded by this gene is a plasma protease inhibitor and member of the serine protease inhibitor class. Polymorphisms in this protein appear to be tissue specific and influence protease targeting. Variations in this protein's sequence have been implicated in Alzheimer's disease, and deficiency of this protein has been associated with liver disease. Mutations have been identified in patients with Parkinson disease and chronic obstructive pulmonary disease. [provided by RefSeq, Jul 2008].

| | |
|-----------------------------|-------------------|
| Target: | SERPINA3 |
| Reactivity: | Human, Mouse, Rat |
| Host: | Rabbit |
| Clonality: | Polyclonal |
| Tested Applications: | WB, IHC, IF/ICC |

Abbexa Ltd, Innovation Centre, Cambridge Science Park, Cambridge, CB4 0EY, UK
Telephone: +44 (0) 1223 755950 - Fax: +44 (0) 1223 755951 - E-Mail: info@abbexa.com

Recommended dilutions: WB: 1/500 - 1/2000, IHC: 1/50 - 1/100, IF/ICC: 1/50 - 1/200. Optimal dilutions/concentrations should be determined by the end user.

Immunogen: Recombinant protein of human SERPINA3.

Purification: Affinity purified.

Form: Liquid

Isotype: IgG

Conjugation: Unconjugated

Storage: Aliquot and store at -20 °C. Avoid repeated freeze/thaw cycles.

Molecular Weight: Calculated MW: 10 kDa/24 kDa/47 kDa
Observed MW: Refer to figures

Swiss Prot: [P01011](#)

GeneID: [12](#)

Gene Symbol: SERPINA3

Concentration: > 1 mg/ml

Buffer: PBS, pH 7.3, 0.02% sodium azide, 50% glycerol.

Note: This product is for research use only.