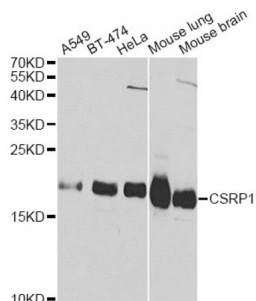


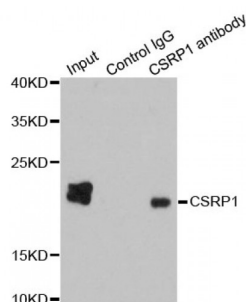
Abbexa Ltd, Innovation Centre, Cambridge Science Park, Cambridge, CB4 0EY, UK
Telephone: +44 (0) 1223 755950 - Fax: +44 (0) 1223 755951 - E-Mail: info@abbexa.com

Cysteine And Glycine Rich Protein 1 (CSRP1) Antibody

Catalogue No.: abx000994



Western blot analysis of extracts of various cell lines, using CSRP1 Antibody (abx000994) at 1/1000 dilution.



Immunoprecipitation analysis of 200 µg extracts of HepG2 cells using 1 µg CSRP1 antibody (abx000994). Western blot was performed from the immunoprecipitate using CSRP1 antibody (abx000994) at a dilution of 1/1000.

CSRP1 Antibody is a Rabbit Polyclonal antibody against CSRP1. This gene encodes a member of the cysteine-rich protein (CSRP) family. This gene family includes a group of LIM domain proteins, which may be involved in regulatory processes important for development and cellular differentiation. The LIM/double zinc-finger motif found in this gene product occurs in proteins with critical functions in gene regulation, cell growth, and somatic differentiation. Alternatively spliced transcript variants have been described. [provided by RefSeq, Aug 2010].

Target: Cysteine And Glycine Rich Protein 1 (CSRP1)

Reactivity: Human, Mouse

Host: Rabbit

Clonality: Polyclonal

Tested Applications: WB, IP, RIP

Recommended dilutions: WB: 1/500 - 1/2000, IP: 1/50 - 1/200, RIP: 1/20 - 1/50. Optimal dilutions/concentrations should be determined by the end user.

Immunogen: Recombinant protein of human CSRP1.

Purification: Affinity purified.

Form: Liquid

Abbexa Ltd, Innovation Centre, Cambridge Science Park, Cambridge, CB4 0EY, UK
Telephone: +44 (0) 1223 755950 - Fax: +44 (0) 1223 755951 - E-Mail: info@abbexa.com

Isotype:	IgG
Conjugation:	Unconjugated
Storage:	Aliquot and store at -20 °C. Avoid repeated freeze/thaw cycles.
Molecular Weight:	Calculated MW: 20 kDa Observed MW: 21 kDa
Swiss Prot:	P21291
GeneID:	1465
Gene Symbol:	CSRP1
Concentration:	> 1 mg/ml
Buffer:	PBS, pH 7.3, 0.02% sodium azide, 50% glycerol.
Note:	This product is for research use only.