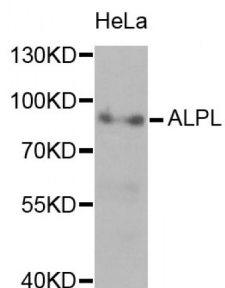


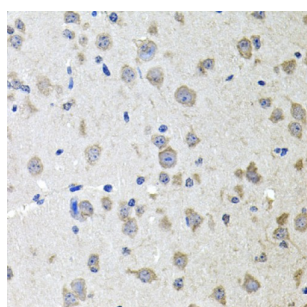
Abbexa Ltd, Innovation Centre, Cambridge Science Park, Cambridge, CB4 0EY, UK  
Telephone: +44 (0) 1223 755950 - Fax: +44 (0) 1223 755951 - E-Mail: [info@abbexa.com](mailto:info@abbexa.com)

## Alkaline Phosphatase, Tissue-Nonspecific Isozyme (ALPL) Antibody

Catalogue No.: abx001003



Western blot analysis of extracts of HeLa cells, using ALPL antibody (abx001003) at 1/1000 dilution.



Immunohistochemistry of paraffin-embedded mouse brain using ALPL antibody (abx001003) at dilution of 1/100 (40x lens).

ALPL Antibody is a Rabbit Polyclonal antibody against ALPL. There are at least four distinct but related alkaline phosphatases: intestinal, placental, placental-like, and liver/bone/kidney (tissue non-specific). The product of this gene is a membrane bound glycosylated enzyme that is not expressed in any particular tissue and is, therefore, referred to as the tissue-nonspecific form of the enzyme. Alkaline phosphatases form various dimers in vivo. This antibody can bind the four mentioned alkaline phosphatases.

<b>Target:</b>	ALPL
<b>Reactivity:</b>	Human, Mouse
<b>Host:</b>	Rabbit
<b>Clonality:</b>	Polyclonal
<b>Tested Applications:</b>	WB, IHC
<b>Recommended dilutions:</b>	WB: 1/500 - 1/2000, IHC: 1/50 - 1/200. Optimal dilutions/concentrations should be determined by the end user.
<b>Immunogen:</b>	Recombinant protein of human ALPL.
<b>Purification:</b>	Affinity purified.
<b>Form:</b>	Liquid

Abbexa Ltd, Innovation Centre, Cambridge Science Park, Cambridge, CB4 0EY, UK  
Telephone: +44 (0) 1223 755950 - Fax: +44 (0) 1223 755951 - E-Mail: [info@abbexa.com](mailto:info@abbexa.com)

<b>Isotype:</b>	IgG
<b>Conjugation:</b>	Unconjugated
<b>Storage:</b>	Aliquot and store at -20 °C. Avoid repeated freeze/thaw cycles.
<b>Molecular Weight:</b>	Calculated MW: 48 kDa/51 kDa/57 kDa Observed MW: 88 kDa
<b>Swiss Prot:</b>	<a href="#">P05186</a>
<b>GeneID:</b>	<a href="#">249</a>
<b>Gene Symbol:</b>	ALPL
<b>Concentration:</b>	> 1 mg/ml
<b>Buffer:</b>	PBS, pH 7.3, 0.02% sodium azide, 50% glycerol.
<b>Note:</b>	This product is for research use only.