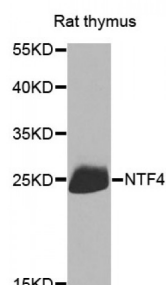


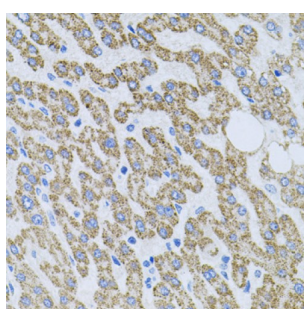
Abbexa Ltd, Innovation Centre, Cambridge Science Park, Cambridge, CB4 0EY, UK  
Telephone: +44 (0) 1223 755950 - Fax: +44 (0) 1223 755951 - E-Mail: [info@abbexa.com](mailto:info@abbexa.com)

## Neurotrophin 4 (NTF4) Antibody

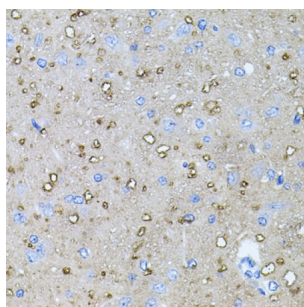
Catalogue No.: abx001004



Western blot analysis of extracts of rat thymus, using NTF4 antibody (abx001004) at 1/1000 dilution.



Immunohistochemistry of paraffin-embedded human liver injury using NTF4 antibody (abx001004) at dilution of 1/100 (40x lens).



Immunohistochemistry of paraffin-embedded rat brain using NTF4 antibody (abx001004) at dilution of 1/100 (40x lens).

NTF4 Antibody is a Rabbit Polyclonal antibody against NTF4. This gene is a member of a family of neurotrophic factors, neurotrophins, that control survival and differentiation of mammalian neurons. The expression of this gene is ubiquitous and less influenced by environmental signals. While knock-outs of other neurotrophins including nerve growth factor, brain-derived neurotrophic factor, and neurotrophin 3 prove lethal during early postnatal development, NTF5-deficient mice only show minor cellular deficits and develop normally to adulthood.

|                             |            |
|-----------------------------|------------|
| <b>Target:</b>              | NTF4       |
| <b>Reactivity:</b>          | Human, Rat |
| <b>Host:</b>                | Rabbit     |
| <b>Clonality:</b>           | Polyclonal |
| <b>Tested Applications:</b> | WB, IHC    |

Abbexa Ltd, Innovation Centre, Cambridge Science Park, Cambridge, CB4 0EY, UK  
Telephone: +44 (0) 1223 755950 - Fax: +44 (0) 1223 755951 - E-Mail: [info@abbexa.com](mailto:info@abbexa.com)

**Recommended dilutions:** WB: 1/500 - 1/2000, IHC: 1/100 - 1/200. Optimal dilutions/concentrations should be determined by the end user.

**Immunogen:** Recombinant protein of human NTF4.

**Purification:** Affinity purified.

**Form:** Liquid

**Isotype:** IgG

**Conjugation:** Unconjugated

**Storage:** Aliquot and store at -20 °C. Avoid repeated freeze/thaw cycles.

**Molecular Weight:** Calculated MW: 22 kDa  
Observed MW: 22KD

**Swiss Prot:** [P34130](#)

**GeneID:** [4909](#)

**Gene Symbol:** NTF4

**Concentration:** > 1 mg/ml

**Buffer:** PBS, pH 7.3, 0.02% sodium azide, 50% glycerol.

**Note:** This product is for research use only.