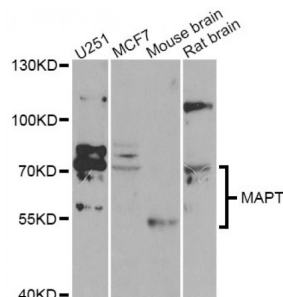


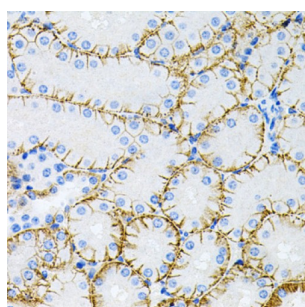
Abbexa Ltd, Innovation Centre, Cambridge Science Park, Cambridge, CB4 0EY, UK
Telephone: +44 (0) 1223 755950 - Fax: +44 (0) 1223 755951 - E-Mail: info@abbexa.com

Microtubule Associated Protein Tau / Tau Protein (MAPT) Antibody

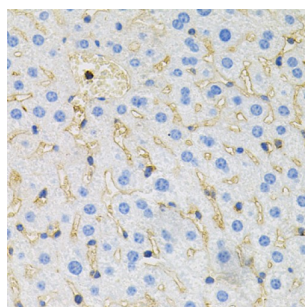
Catalogue No.: abx001022



Western blot analysis of extracts of various cell lines, using MAPT Antibody (abx001022) at 1/1000 dilution.



Immunohistochemistry of paraffin-embedded mouse kidney using MAPT antibody (abx001022) at dilution of 1/100 (40x lens).



Immunohistochemistry of paraffin-embedded mouse liver using MAPT antibody (abx001022) at dilution of 1/100 (40x lens).

MAPT Antibody is a Rabbit Polyclonal antibody against MAPT. This gene encodes the microtubule-associated protein tau (MAPT) whose transcript undergoes complex, regulated alternative splicing, giving rise to several mRNA species. MAPT transcripts are differentially expressed in the nervous system, depending on stage of neuronal maturation and neuron type. MAPT gene mutations have been associated with several neurodegenerative disorders such as Alzheimer's disease, Pick's disease, frontotemporal dementia, cortico-basal degeneration and progressive supranuclear palsy.

Target: MAPT

Reactivity: Human, Mouse, Rat

Host: Rabbit

Clonality: Polyclonal

Tested Applications: WB, IHC

Abbexa Ltd, Innovation Centre, Cambridge Science Park, Cambridge, CB4 0EY, UK
Telephone: +44 (0) 1223 755950 - Fax: +44 (0) 1223 755951 - E-Mail: info@abbexa.com

Recommended dilutions: WB: 1/500 - 1/2000, IHC: 1/100 - 1/200. Optimal dilutions/concentrations should be determined by the end user.

Immunogen: Recombinant protein of human MAPT.

Purification: Affinity purified.

Form: Liquid

Isotype: IgG

Conjugation: Unconjugated

Storage: Aliquot and store at -20 °C. Avoid repeated freeze/thaw cycles.

Molecular Weight: Calculated MW: 32-45 kDa/78- 80 kDa
Observed MW: 60 kDa, 75 kDa

Swiss Prot: [P10636](#)

GeneID: [4137](#)

Gene Symbol: MAPT

Concentration: > 1 mg/ml

Buffer: PBS, pH 7.3, 0.02% sodium azide, 50% glycerol.

Note: This product is for research use only.