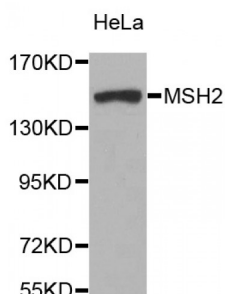


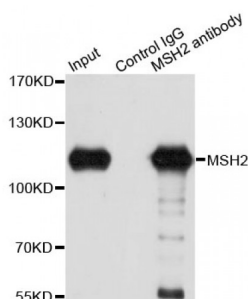
Abbexa Ltd, Innovation Centre, Cambridge Science Park, Cambridge, CB4 0EY, UK
Telephone: +44 (0) 1223 755950 - Fax: +44 (0) 1223 755951 - E-Mail: info@abbexa.com

MutS Homolog 2, Colon Cancer, Nonpolyposis Type 1 (E. Coli) (MSH2) Antibody

Catalogue No.: abx001036



Western blot analysis of extracts of HeLa cells, using MSH2 antibody (abx001036).



Immunoprecipitation analysis of 150 µg extracts of A549 cells using 3 µg MSH2 antibody (abx001036). Western blot was performed from the immunoprecipitate using MSH2 antibody (abx001036) at a dilution of 1/1000.

MSH2 Antibody is a Rabbit Polyclonal antibody against MSH2. This locus is frequently mutated in hereditary nonpolyposis colon cancer (HNPCC). When cloned, it was discovered to be a human homolog of the E. coli mismatch repair gene mutS, consistent with the characteristic alterations in microsatellite sequences (RER+ phenotype) found in HNPCC. Two transcript variants encoding different isoforms have been found for this gene.

Target: MSH2

Reactivity: Human, Mouse, Rat

Host: Rabbit

Clonality: Polyclonal

Tested Applications: WB, IP

Recommended dilutions: WB: 1/500 - 1/2000, IP: 1/20 - 1/50. Optimal dilutions/concentrations should be determined by the end user.

Immunogen: Recombinant protein of human MSH2.

Purification: Affinity purified.

Form: Liquid

Abbexa Ltd, Innovation Centre, Cambridge Science Park, Cambridge, CB4 0EY, UK
Telephone: +44 (0) 1223 755950 - Fax: +44 (0) 1223 755951 - E-Mail: info@abbexa.com

Isotype:	IgG
Conjugation:	Unconjugated
Storage:	Aliquot and store at -20 °C. Avoid repeated freeze/thaw cycles.
Molecular Weight:	Calculated MW: 97 kDa/104 kDa Observed MW: 150 kDa
Swiss Prot:	P43246
GeneID:	4436
Gene Symbol:	MSH2
Concentration:	> 1 mg/ml
Buffer:	PBS, pH 7.3, 0.02% sodium azide, 50% glycerol.
Note:	This product is for research use only.