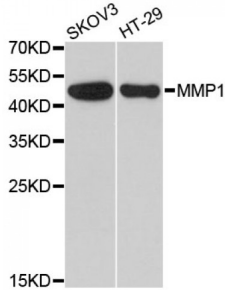
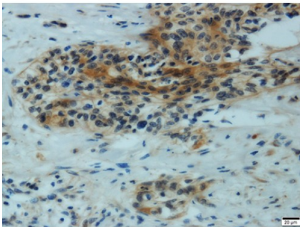


Matrix Metalloproteinase 1 (MMP1) Antibody

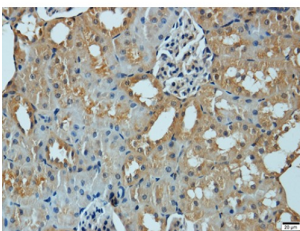
Catalogue No.: abx001105



Western blot analysis of extracts of various cell lines, using MMP1 antibody (abx001105) at 1/1000 dilution.



Immunohistochemistry of paraffin-embedded human cervical carcinoma using MMP1 antibody (abx001105) at dilution of 1:300 (40x lens).



Immunohistochemistry of paraffin-embedded mouse kidney using MMP1 antibody (abx001105) at dilution of 1/200 (40x lens).

MMP1 Antibody is a Rabbit Polyclonal antibody against MMP1. Proteins of the matrix metalloproteinase (MMP) family are involved in the breakdown of extracellular matrix in normal physiological processes, such as embryonic development, reproduction, and tissue remodeling, as well as in disease processes, such as arthritis and metastasis. Most MMP's are secreted as inactive proproteins which are activated when cleaved by extracellular proteinases. This gene encodes a secreted enzyme which breaks down the interstitial collagens, types I, II, and III. The gene is part of a cluster of MMP genes which localize to chromosome 11q22.3. Alternative splicing results in multiple transcript variants.[provided by RefSeq, Mar 2009].

Target: Matrix Metalloproteinase 1 (MMP1)

Reactivity: Human, Mouse

Host: Rabbit

Clonality: Polyclonal

Tested Applications: WB, IHC

Abbexa Ltd, Innovation Centre, Cambridge Science Park, Cambridge, CB4 0EY, UK
Telephone: +44 (0) 1223 755950 - Fax: +44 (0) 1223 755951 - E-Mail: info@abbexa.com

Recommended dilutions: WB: 1/500 - 1/2000, IHC: 1/50 - 1/200. Optimal dilutions/concentrations should be determined by the end user.

Immunogen: Recombinant protein of human ARRB2.

Purification: Affinity purified.

Form: Liquid

Isotype: IgG

Conjugation: Unconjugated

Storage: Aliquot and store at -20 °C. Avoid repeated freeze/thaw cycles.

Molecular Weight: Calculated MW: 54 kDa
Observed MW: 54 kDa

Swiss Prot: [P03956](#)

GeneID: [4312](#)

Gene Symbol: MMP1

Concentration: > 1 mg/ml

Buffer: PBS, pH 7.3, 0.02% sodium azide, 50% glycerol.

Note: This product is for research use only.