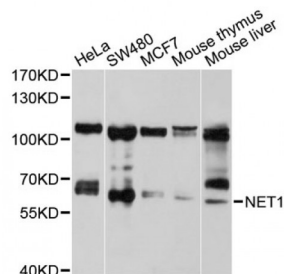


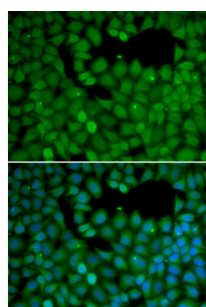
Abbexa Ltd, Innovation Centre, Cambridge Science Park, Cambridge, CB4 0EY, UK
Telephone: +44 (0) 1223 755950 - Fax: +44 (0) 1223 755951 - E-Mail: info@abbexa.com

Neuroepithelial Cell Transforming Gene 1 (NET1) Antibody

Catalogue No.: abx001125



Western blot analysis of extracts of various cell lines, using NET1 antibody (abx001125) at 1/1000 dilution.



Immunofluorescence analysis of HeLa cells using NET1 antibody (abx001125). Blue: DAPI for nuclear staining.

NET1 Antibody is a Rabbit Polyclonal antibody against NET1. This gene is part of the family of Rho guanine nucleotide exchange factors. Members of this family activate Rho proteins by catalyzing the exchange of GDP for GTP. The protein encoded by this gene interacts with RhoA within the cell nucleus and may play a role in repairing DNA damage after ionizing radiation. Pseudogenes of this gene are located on the long arms of chromosomes 1, 7 and 18. Alternative splicing results in multiple transcript variants that encode different protein isoforms. [provided by RefSeq, Jul 2012].

Target: NET1

Reactivity: Human, Mouse, Rat

Host: Rabbit

Clonality: Polyclonal

Tested Applications: WB, IF/ICC

Recommended dilutions: WB: 1/500 - 1/2000, IF/ICC: 1/50 - 1/200. Optimal dilutions/concentrations should be determined by the end user.

Immunogen: Recombinant protein of human NET1.

Purification: Affinity purified.

Form: Liquid

Abbexa Ltd, Innovation Centre, Cambridge Science Park, Cambridge, CB4 0EY, UK
Telephone: +44 (0) 1223 755950 - Fax: +44 (0) 1223 755951 - E-Mail: info@abbexa.com

Isotype:	IgG
Conjugation:	Unconjugated
Storage:	Aliquot and store at -20 °C. Avoid repeated freeze/thaw cycles.
Molecular Weight:	Calculated MW: 61 kDa/67 kDa Observed MW: 68 kDa
Swiss Prot:	Q7Z628
GeneID:	10276
Gene Symbol:	NET1
Concentration:	> 1 mg/ml
Buffer:	PBS, pH 7.3, 0.02% sodium azide, 50% glycerol.
Note:	This product is for research use only.