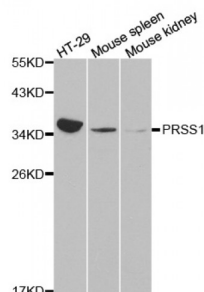


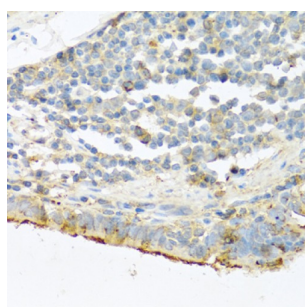
Abbexa Ltd, Innovation Centre, Cambridge Science Park, Cambridge, CB4 0EY, UK
Telephone: +44 (0) 1223 755950 - Fax: +44 (0) 1223 755951 - E-Mail: info@abbexa.com

Protease, Serine, 1 (PRSS1) Antibody

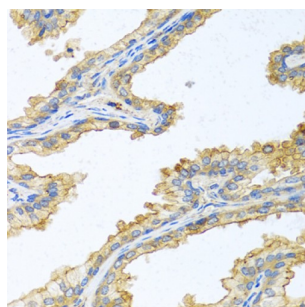
Catalogue No.: abx001154



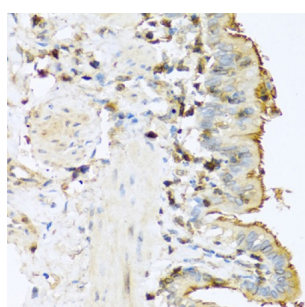
Western blot analysis of extracts of various cell lines, using PRSS1 antibody (abx001154) at 1/1000 dilution.



Immunohistochemistry of paraffin-embedded human lung cancer using PRSS1 antibody (abx001154) at dilution of 1/100 (40x lens).



Immunohistochemistry of paraffin-embedded human prostate using PRSS1 antibody (abx001154) at dilution of 1/100 (40x lens).



Immunohistochemistry of paraffin-embedded mouse lung using PRSS1 antibody (abx001154) at dilution of 1/100 (40x lens).

PRSS1 Antibody is a Rabbit Polyclonal antibody against PRSS1. This gene encodes a trypsinogen, which is a member of the trypsin family of serine proteases. This enzyme is secreted by the pancreas and cleaved to its active form in the small intestine. It is active on peptide linkages involving the carboxyl group of lysine or arginine. Mutations in this gene are associated with hereditary pancreatitis. This gene and several other trypsinogen genes are localized to the T cell receptor beta locus on chromosome 7. [provided by RefSeq, Jul 2008].

Target: PRSS1

Abbexa Ltd, Innovation Centre, Cambridge Science Park, Cambridge, CB4 0EY, UK
Telephone: +44 (0) 1223 755950 - Fax: +44 (0) 1223 755951 - E-Mail: info@abbexa.com

Reactivity: Human, Mouse

Host: Rabbit

Clonality: Polyclonal

Tested Applications: WB, IHC

Recommended dilutions: WB: 1/500 - 1/2000, IHC: 1/100 - 1/200. Optimal dilutions/concentrations should be determined by the end user.

Immunogen: Recombinant protein of human PRSS1.

Purification: Affinity purified.

Form: Liquid

Isotype: IgG

Conjugation: Unconjugated

Storage: Aliquot and store at -20 °C. Avoid repeated freeze/thaw cycles.

Molecular Weight: Calculated MW: 26 kDa
Observed MW: 35 kDa

Swiss Prot: [P07477](#)

GeneID: [5644](#)

Gene Symbol: PRSS1

Concentration: > 1 mg/ml

Buffer: PBS, pH 7.3, 0.02% sodium azide, 50% glycerol.

Note: This product is for research use only.