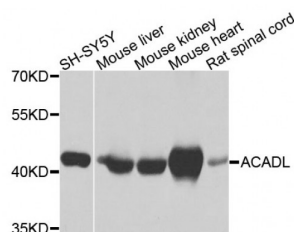


Abbexa Ltd, Innovation Centre, Cambridge Science Park, Cambridge, CB4 0EY, UK
Telephone: +44 (0) 1223 755950 - Fax: +44 (0) 1223 755951 - E-Mail: info@abbexa.com

Acyl-CoA Dehydrogenase, Long Chain (ACADL) Antibody

Catalogue No.: abx001172



Western blot analysis of extracts of various cell lines, using ACADL antibody (abx001172) at 1/1000 dilution.

ACADL Antibody is a Rabbit Polyclonal antibody against ACADL. ACADL (Long-chain specific acyl-CoA dehydrogenase, mitochondrial) is also named as LCAD and belongs to the acyl-CoA dehydrogenase family. It catalyzes the first reaction of the mitochondrial β -oxidation of fatty acids and is synthesized in the cytosol as a precursor that is larger than its mature form. The size difference between the precursor and mature rat LCAD has been estimated to be 3 kDa on the basis of SDS-PAGE (PMID:1774065). Defects in ACADL are a cause of acyl-CoA dehydrogenase very long-chain deficiency (ACADVL). This antibody is specific to ACADL.

Target: ACADL

Reactivity: Human, Mouse, Rat

Host: Rabbit

Clonality: Polyclonal

Tested Applications: WB

Recommended dilutions: WB: 1/500 - 1/2000. Optimal dilutions/concentrations should be determined by the end user.

Immunogen: Recombinant protein of human ACADL.

Purification: Affinity purified.

Form: Liquid

Isotype: IgG

Conjugation: Unconjugated

Storage: Aliquot and store at -20 °C. Avoid repeated freeze/thaw cycles.

Molecular Weight: Calculated MW: 47 kDa
Observed MW: 48 kDa

Abbexa Ltd, Innovation Centre, Cambridge Science Park, Cambridge, CB4 0EY, UK
Telephone: +44 (0) 1223 755950 - Fax: +44 (0) 1223 755951 - E-Mail: info@abbexa.com

Swiss Prot: [P28330](#)

GeneID: [33](#)

Gene Symbol: ACADL

Concentration: > 1 mg/ml

Buffer: PBS, pH 7.3, 0.02% sodium azide, 50% glycerol.

Note: This product is for research use only.