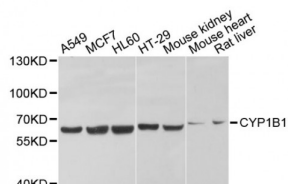


Abbexa Ltd, Innovation Centre, Cambridge Science Park, Cambridge, CB4 0EY, UK  
Telephone: +44 (0) 1223 755950 - Fax: +44 (0) 1223 755951 - E-Mail: [info@abbexa.com](mailto:info@abbexa.com)

## Cytochrome P450 1B1 (CYP1B1) Antibody

Catalogue No.: abx001210



Western blot analysis of extracts of various cell lines, using CYP1B1 antibody (abx001210) at 1/1000 dilution.

CYP1B1 Antibody is a Rabbit Polyclonal antibody against CYP1B1. Cytochrome P450 1B1 (CYP1B1) is a key enzyme involved in the production of potentially carcinogenic estrogen metabolites and the activation of environmental carcinogens and is the predominant member of the CYP1 family expressed in normal breast tissue and breast cancer. Estrogen has been proposed to trigger breast cancer development via an initiating mechanism involving its metabolite, catechol estrogen (CE). CYP1B1 catalyzes the conversion of 17-beta-estradiol to the catechol estrogen metabolites 2-OH-E2 and 4-OH-E2 which have both been postulated to be involved in mammary carcinogenesis. Genetic polymorphisms in CYP1B1 may play an important role in human prostate carcinogenesis as well. Polymorphism of the CYP1B1 gene at codon 432 (Val-->Leu) is associated with a change in catalytic function.

<b>Target:</b>	CYP1B1
<b>Reactivity:</b>	Human, Mouse, Rat
<b>Host:</b>	Rabbit
<b>Clonality:</b>	Polyclonal
<b>Tested Applications:</b>	WB

**Recommended dilutions:** WB: 1/500 - 1/2000. Optimal dilutions/concentrations should be determined by the end user.

<b>Immunogen:</b>	Recombinant protein of human CYP1B1.
<b>Purification:</b>	Affinity purified.
<b>Form:</b>	Liquid
<b>Isotype:</b>	IgG
<b>Conjugation:</b>	Unconjugated
<b>Storage:</b>	Aliquot and store at -20 °C. Avoid repeated freeze/thaw cycles.

Abbexa Ltd, Innovation Centre, Cambridge Science Park, Cambridge, CB4 0EY, UK  
Telephone: +44 (0) 1223 755950 - Fax: +44 (0) 1223 755951 - E-Mail: [info@abbexa.com](mailto:info@abbexa.com)

<b>Molecular Weight:</b>	Calculated MW: 60 kDa Observed MW: 62 kDa
<b>Swiss Prot:</b>	<a href="#"><u>Q16678</u></a>
<b>GeneID:</b>	<a href="#"><u>1545</u></a>
<b>Gene Symbol:</b>	CYP1B1
<b>Concentration:</b>	> 1 mg/ml
<b>Buffer:</b>	PBS, pH 7.3, 0.02% sodium azide, 50% glycerol.
<b>Note:</b>	This product is for research use only.