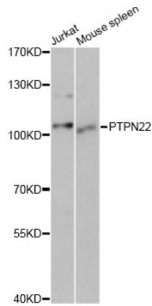


Protein Tyrosine Phosphatase, Non Receptor Type 22 (PTPN22) Antibody

Catalogue No.: abx001222



Western blot analysis of extracts of various cell lines, using PTPN22 antibody (abx001222) at 1/1000 dilution.

PTPN22 Antibody is a Rabbit Polyclonal antibody against PTPN22. This gene encodes of member of the non-receptor class 4 subfamily of the protein-tyrosine phosphatase family. The encoded protein is a lymphoid-specific intracellular phosphatase that associates with the molecular adapter protein CBL and may be involved in regulating CBL function in the T-cell receptor signaling pathway. Mutations in this gene may be associated with a range of autoimmune disorders including Type 1 Diabetes, rheumatoid arthritis, systemic lupus erythematosus and Graves' disease. Alternatively spliced transcript variants encoding distinct isoforms have been described.

Target: PTPN22

Reactivity: Human, Mouse

Host: Rabbit

Clonality: Polyclonal

Tested Applications: WB

Recommended dilutions: WB: 1/500 - 1/2000. Optimal dilutions/concentrations should be determined by the end user.

Immunogen: Recombinant protein of human PTPN22.

Purification: Affinity purified.

Form: Liquid

Isotype: IgG

Conjugation: Unconjugated

Storage: Aliquot and store at -20 °C. Avoid repeated freeze/thaw cycles.

Abbexa Ltd, Innovation Centre, Cambridge Science Park, Cambridge, CB4 0EY, UK
Telephone: +44 (0) 1223 755950 - Fax: +44 (0) 1223 755951 - E-Mail: info@abbexa.com

Molecular Weight: Calculated MW: 20 kDa/75 kDa/78 kDa/85 kDa/88 kDa/91 kDa
Observed MW: 107 kDa

Swiss Prot: [Q9Y2R2](#)

GeneID: [26191](#)

Gene Symbol: PTPN22

Concentration: > 1 mg/ml

Buffer: PBS, pH 7.3, 0.02% sodium azide, 50% glycerol.

Note: This product is for research use only.