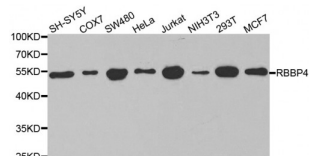


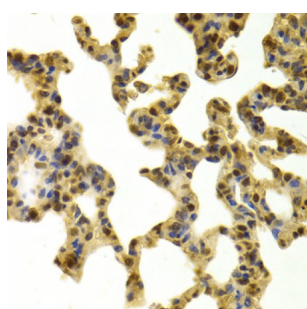
Abbexa Ltd, Innovation Centre, Cambridge Science Park, Cambridge, CB4 0EY, UK
Telephone: +44 (0) 1223 755950 - Fax: +44 (0) 1223 755951 - E-Mail: info@abbexa.com

Histone-Binding Protein RBBP4 (RBBP4) Antibody

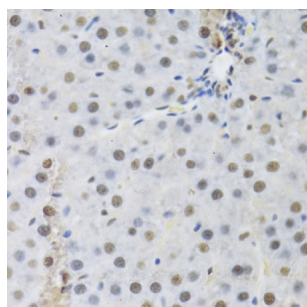
Catalogue No.: abx001264



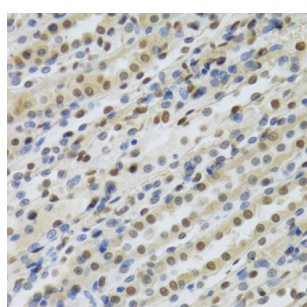
Western blot analysis of extracts of various cell lines, using RBBP4 antibody (abx001264) at 1/1000 dilution.



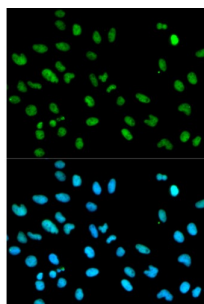
Immunohistochemistry of paraffin-embedded mouse lung using RBBP4 Antibody (abx001264) at dilution of 1/100 (40x lens).



Immunohistochemistry of paraffin-embedded rat liver using RBBP4 Antibody (abx001264) at dilution of 1/100 (40x lens).

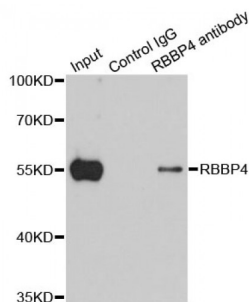


Immunohistochemistry of paraffin-embedded rat kidney using RBBP4 Antibody (abx001264) at dilution of 1/100 (40x lens).



Immunofluorescence analysis of MCF-7 cells using RBBP4 antibody (abx001264). Blue: DAPI for nuclear staining.

Abbexa Ltd, Innovation Centre, Cambridge Science Park, Cambridge, CB4 0EY, UK
Telephone: +44 (0) 1223 755950 - Fax: +44 (0) 1223 755951 - E-Mail: info@abbexa.com



Immunoprecipitation analysis of 200 µg extracts of 293T cells using 1 µg RBBP4 antibody (abx001264). Western blot was performed from the immunoprecipitate using RBBP4 antibody (abx001264) at a dilution of 1/1000.

RBBP4 Antibody is a Rabbit Polyclonal antibody against RBBP4. This gene encodes a ubiquitously expressed nuclear protein which belongs to a highly conserved subfamily of WD-repeat proteins. It is present in protein complexes involved in histone acetylation and chromatin assembly. It is part of the Mi-2 complex which has been implicated in chromatin remodeling and transcriptional repression associated with histone deacetylation. This encoded protein is also part of co-repressor complexes, which is an integral component of transcriptional silencing. It is found among several cellular proteins that bind directly to retinoblastoma protein to regulate cell proliferation. This protein also seems to be involved in transcriptional repression of E2F-responsive genes. Three transcript variants encoding different isoforms have been found for this gene.

Target: RBBP4

Reactivity: Human, Mouse, Rat, Monkey

Host: Rabbit

Clonality: Polyclonal

Tested Applications: WB, IHC, IF/ICC, IP

Recommended dilutions: WB: 1/500 - 1/2000, IHC: 1/50 - 1/200, IF/ICC: 1/50 - 1/200, IP: 1/50 - 1/200. Optimal dilutions/concentrations should be determined by the end user.

Immunogen: Recombinant protein of human RBBP4.

Purification: Affinity purified.

Form: Liquid

Isotype: IgG

Conjugation: Unconjugated

Storage: Aliquot and store at -20 °C. Avoid repeated freeze/thaw cycles.

Molecular Weight: Calculated MW: 43 kDa/46 kDa/47 kDa
Observed MW: 55 kDa

Abbexa Ltd, Innovation Centre, Cambridge Science Park, Cambridge, CB4 0EY, UK
Telephone: +44 (0) 1223 755950 - Fax: +44 (0) 1223 755951 - E-Mail: info@abbexa.com

Swiss Prot: [Q09028](#)

GeneID: [5928](#)

Gene Symbol: RBBP4

Concentration: > 1 mg/ml

Buffer: PBS, pH 7.3, 0.02% sodium azide, 50% glycerol.

Note: This product is for research use only.