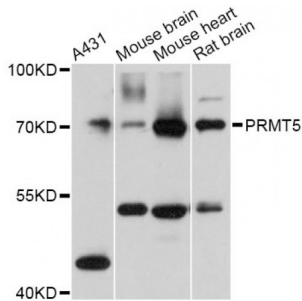


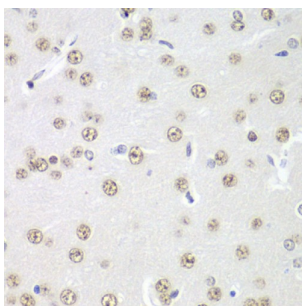
Abbexa Ltd, Innovation Centre, Cambridge Science Park, Cambridge, CB4 0EY, UK
 Telephone: +44 (0) 1223 755950 - Fax: +44 (0) 1223 755951 - E-Mail: info@abbexa.com

Protein Arginine Methyltransferase 5 (PRMT5) Antibody

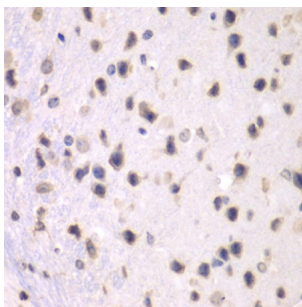
Catalogue No.: abx001281



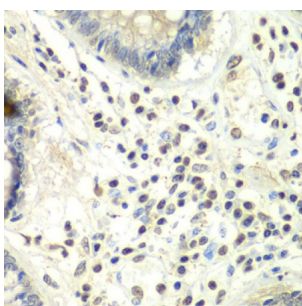
Western blot analysis of extracts of various cell lines, using PRMT5 Antibody (abx001281) at 1:3000 dilution.



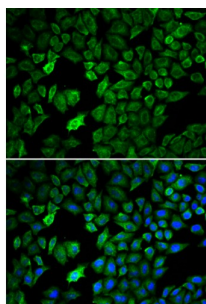
Immunohistochemistry of paraffin-embedded rat brain using PRMT5 antibody (abx001281) at dilution of 1/100 (40x lens).



Immunohistochemistry of paraffin-embedded mouse brain using PRMT5 antibody (abx001281) at dilution of 1/100 (40x lens).



Immunohistochemistry of paraffin-embedded human colon using PRMT5 antibody (abx001281) at dilution of 1/100 (40x lens).



Immunofluorescence analysis of U2OS cells using PRMT5 antibody (abx001281). Blue: DAPI for nuclear staining.

PRMT5 Antibody is a Rabbit Polyclonal antibody against PRMT5. PRMT5 (protein arginine methyltransferase 5) is a protein-

Abbexa Ltd, Innovation Centre, Cambridge Science Park, Cambridge, CB4 0EY, UK
Telephone: +44 (0) 1223 755950 - Fax: +44 (0) 1223 755951 - E-Mail: info@abbexa.com

coding gene. GO annotations related to this gene include chromatin binding and ribonucleoprotein complex binding.

Target:	PRMT5
Reactivity:	Human, Mouse, Rat, Monkey
Host:	Rabbit
Clonality:	Polyclonal
Tested Applications:	WB, IHC, IF/ICC
Recommended dilutions:	WB: 1/500 - 1/2000, IHC: 1/50 - 1/100, IF/ICC: 1/50 - 1/200. Optimal dilutions/concentrations should be determined by the end user.
Immunogen:	A synthetic peptide of human PRMT5.
Purification:	Affinity purified.
Form:	Liquid
Isotype:	IgG
Conjugation:	Unconjugated
Storage:	Aliquot and store at -20 °C. Avoid repeated freeze/thaw cycles.
Molecular Weight:	Calculated MW: 53 kDa/66 kDa/67 kDa/71 kDa/72 kDa Observed MW: 73 kDa
Swiss Prot:	O14744
GeneID:	10419
Gene Symbol:	PRMT5
Concentration:	> 5.24 mg/ml
Buffer:	PBS, pH 7.3, 0.02% sodium azide, 50% glycerol.
Note:	This product is for research use only.