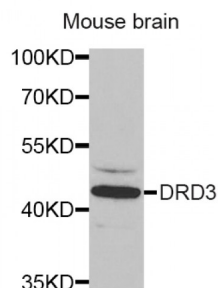


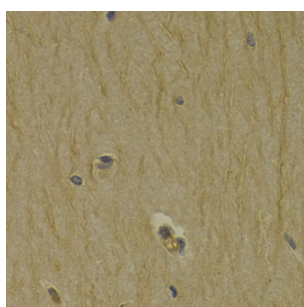
Abbexa Ltd, Innovation Centre, Cambridge Science Park, Cambridge, CB4 0EY, UK  
Telephone: +44 (0) 1223 755950 - Fax: +44 (0) 1223 755951 - E-Mail: [info@abbexa.com](mailto:info@abbexa.com)

## Dopamine Receptor D3 (DRD3) Antibody

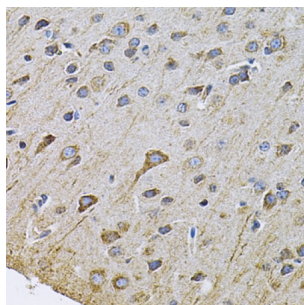
Catalogue No.: abx001308



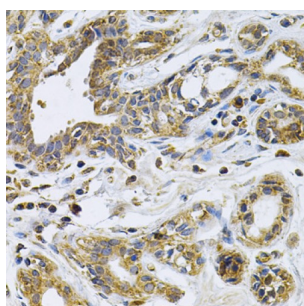
Western blot analysis of extracts of mouse brain, using DRD3 antibody (abx001308) at 1/1000 dilution.



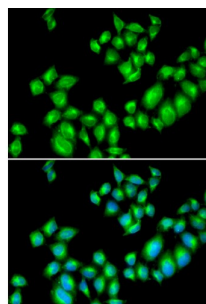
Immunohistochemistry of paraffin-embedded rat brain using DRD3 Antibody (abx001308) at dilution of 1/200 (40x lens).



Immunohistochemistry of paraffin-embedded rat brain using DRD3 Antibody (abx001308) at dilution of 1/100 (40x lens).



Immunohistochemistry of paraffin-embedded human breast cancer using DRD3 Antibody (abx001308) at dilution of 1/100 (40x lens).



Immunofluorescence analysis of U2OS cells using DRD3 antibody (abx001308). Blue: DAPI for nuclear staining.

DRD3 Antibody is a Rabbit Polyclonal antibody against DRD3. This gene encodes the D3 subtype of the five (D1-D5) dopamine

Abbexa Ltd, Innovation Centre, Cambridge Science Park, Cambridge, CB4 0EY, UK  
Telephone: +44 (0) 1223 755950 - Fax: +44 (0) 1223 755951 - E-Mail: [info@abbexa.com](mailto:info@abbexa.com)

receptors. The activity of the D3 subtype receptor is mediated by G proteins which inhibit adenylyl cyclase. This receptor is localized to the limbic areas of the brain, which are associated with cognitive, emotional, and endocrine functions. Genetic variation in this gene may be associated with susceptibility to hereditary essential tremor 1. Alternative splicing of this gene results in transcript variants encoding different isoforms, although some variants may be subject to nonsense-mediated decay (NMD).

**Target:** DRD3

**Reactivity:** Human, Mouse, Rat

**Host:** Rabbit

**Clonality:** Polyclonal

**Tested Applications:** WB, IHC, IF/ICC

**Recommended dilutions:** WB: 1/500 - 1/2000, IHC: 1/50 - 1/200, IF/ICC: 1/50 - 1/200. Optimal dilutions/concentrations should be determined by the end user.

**Immunogen:** Recombinant protein of human DRD3.

**Purification:** Affinity purified.

**Form:** Liquid

**Isotype:** IgG

**Conjugation:** Unconjugated

**Storage:** Aliquot and store at -20 °C. Avoid repeated freeze/thaw cycles.

**Molecular Weight:** Calculated MW: 40 kDa/44 kDa  
Observed MW: 44 kDa

**Swiss Prot:** [P35462](#)

**GeneID:** [1814](#)

**Gene Symbol:** DRD3

**Concentration:** > 1 mg/ml

**Buffer:** PBS, pH 7.3, 0.02% sodium azide, 50% glycerol.

**Note:** This product is for research use only.