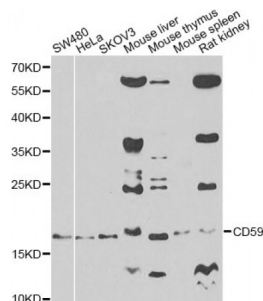


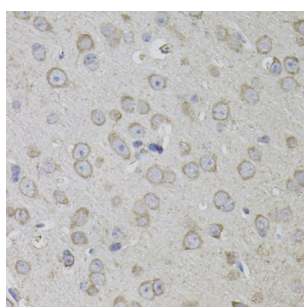
Abbexa Ltd, Innovation Centre, Cambridge Science Park, Cambridge, CB4 0EY, UK  
Telephone: +44 (0) 1223 755950 - Fax: +44 (0) 1223 755951 - E-Mail: [info@abbexa.com](mailto:info@abbexa.com)

## Protectin (CD59) Antibody

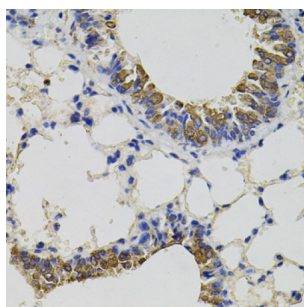
Catalogue No.: abx001417



Western blot analysis of extracts of various cell lines, using CD59 antibody (abx001417) at 1/500 dilution.



Immunohistochemistry of paraffin-embedded mouse brain using CD59 antibody (abx001417) (40x lens).



Immunohistochemistry of paraffin-embedded mouse lung using CD59 antibody (abx001417) (40x lens).

CD59 Antibody is a Rabbit Polyclonal antibody against CD59. This gene encodes a cell surface glycoprotein that regulates complement-mediated cell lysis, and it is involved in lymphocyte signal transduction. This protein is a potent inhibitor of the complement membrane attack complex, whereby it binds complement C8 and/or C9 during the assembly of this complex, thereby inhibiting the incorporation of multiple copies of C9 into the complex, which is necessary for osmolytic pore formation. This protein also plays a role in signal transduction pathways in the activation of T cells. Mutations in this gene cause CD59 deficiency, a disease resulting in hemolytic anemia and thrombosis, and which causes cerebral infarction. Multiple alternatively spliced transcript variants, which encode the same protein, have been identified for this gene. [provided by RefSeq, Jul 2008].

|                    |                   |
|--------------------|-------------------|
| <b>Target:</b>     | CD59              |
| <b>Reactivity:</b> | Human, Mouse, Rat |
| <b>Host:</b>       | Rabbit            |
| <b>Clonality:</b>  | Polyclonal        |

Abbexa Ltd, Innovation Centre, Cambridge Science Park, Cambridge, CB4 0EY, UK  
Telephone: +44 (0) 1223 755950 - Fax: +44 (0) 1223 755951 - E-Mail: [info@abbexa.com](mailto:info@abbexa.com)

**Tested Applications:** WB, IHC

**Recommended dilutions:** WB: 1/500 - 1/2000, IHC: 1/50 - 1/100. Optimal dilutions/concentrations should be determined by the end user.

**Immunogen:** Recombinant protein of human CD59.

**Purification:** Affinity purified.

**Form:** Liquid

**Isotype:** IgG

**Conjugation:** Unconjugated

**Storage:** Aliquot and store at -20 °C. Avoid repeated freeze/thaw cycles.

**Molecular Weight:** Calculated MW: 14 kDa  
Observed MW: 17 kDa

**Swiss Prot:** [P13987](#)

**GeneID:** [966](#)

**Gene Symbol:** CD59

**Concentration:** > 1 mg/ml

**Buffer:** PBS, pH 7.3, 0.02% sodium azide, 50% glycerol.

**Note:** This product is for research use only.