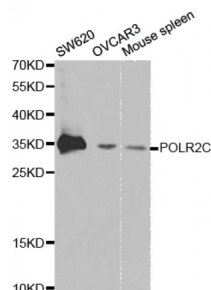


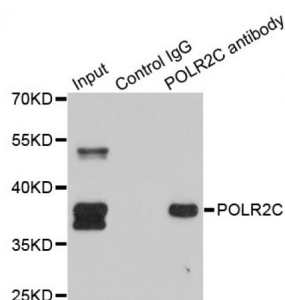
Abbexa Ltd, Innovation Centre, Cambridge Science Park, Cambridge, CB4 0EY, UK
Telephone: +44 (0) 1223 755950 - Fax: +44 (0) 1223 755951 - E-Mail: info@abbexa.com

RNA Polymerase II Subunit C (POLR2C) Antibody

Catalogue No.: abx001481



Western blot analysis of extracts of various cell lines, using POLR2C antibody (abx001481) at 1/1000 dilution.



Immunoprecipitation analysis of 150 µg extracts of SW620 cells using 3 µg POLR2C antibody (abx001481). Western blot was performed from the immunoprecipitate using POLR2C antibody (abx001481) at a dilution of 1/500.

POLR2C Antibody is a Rabbit Polyclonal antibody against POLR2C. This gene encodes the third largest subunit of RNA polymerase II, the polymerase responsible for synthesizing messenger RNA in eukaryotes. The product of this gene contains a cysteine rich region and exists as a heterodimer with another polymerase subunit, POLR2J. These two subunits form a core subassembly unit of the polymerase. A pseudogene has been identified on chromosome 21.

Target: POLR2C

Reactivity: Human, Mouse

Host: Rabbit

Clonality: Polyclonal

Tested Applications: WB, IP

Recommended dilutions: WB: 1/500 - 1/2000, IP: 1/20 - 1/50. Optimal dilutions/concentrations should be determined by the end user.

Immunogen: Recombinant protein of human POLR2C.

Purification: Affinity purified.

Form: Liquid

Abbexa Ltd, Innovation Centre, Cambridge Science Park, Cambridge, CB4 0EY, UK
Telephone: +44 (0) 1223 755950 - Fax: +44 (0) 1223 755951 - E-Mail: info@abbexa.com

Isotype:	IgG
Conjugation:	Unconjugated
Storage:	Aliquot and store at -20 °C. Avoid repeated freeze/thaw cycles.
Molecular Weight:	Calculated MW: 31 kDa Observed MW: 33 kDa
Swiss Prot:	P19387
GeneID:	5432
Gene Symbol:	POLR2C
Concentration:	> 1 mg/ml
Buffer:	PBS, pH 7.3, 0.02% sodium azide, 50% glycerol.
Note:	This product is for research use only.