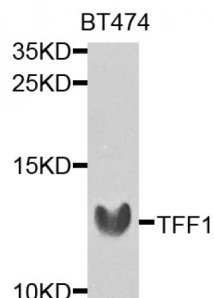


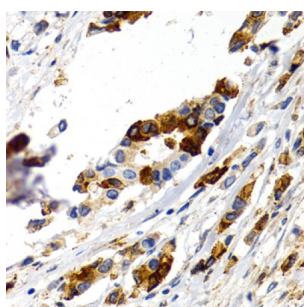
Abbexa Ltd, Innovation Centre, Cambridge Science Park, Cambridge, CB4 0EY, UK  
Telephone: +44 (0) 1223 755950 - Fax: +44 (0) 1223 755951 - E-Mail: [info@abbexa.com](mailto:info@abbexa.com)

## Trefoil Factor 1 (TFF1) Antibody

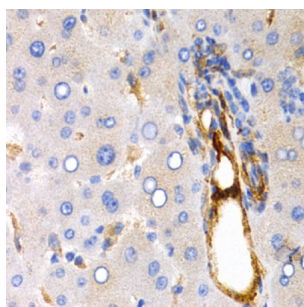
Catalogue No.: abx001483



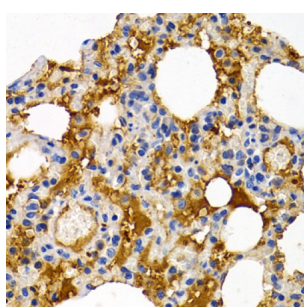
Western blot analysis of extracts of BT-474 cells, using TFF1 antibody (abx001483) at 1/1000 dilution.



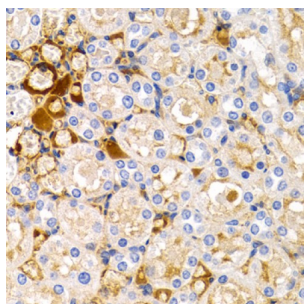
Immunohistochemistry of paraffin-embedded human mammary cancer using TFF1 antibody (abx001483) at dilution of 1/200 (40x lens).



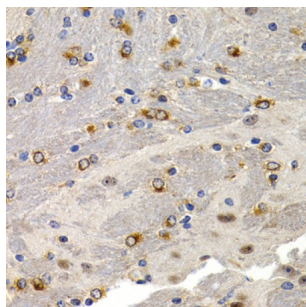
Immunohistochemistry of paraffin-embedded human liver cancer using TFF1 antibody (abx001483) at dilution of 1/200 (40x lens).



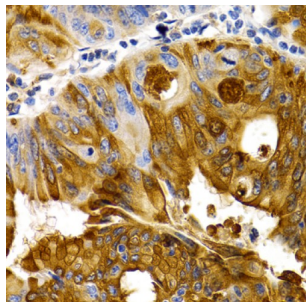
Immunohistochemistry of paraffin-embedded rat lung using TFF1 antibody (abx001483) at dilution of 1/200 (40x lens).



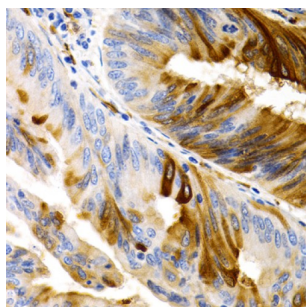
Immunohistochemistry of paraffin-embedded rat kidney using TFF1 antibody (abx001483) at dilution of 1/200 (40x lens).



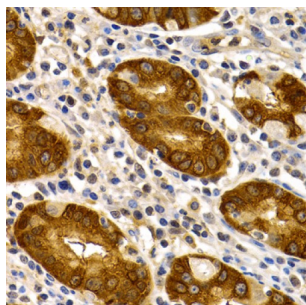
Immunohistochemistry of paraffin-embedded mouse brain using TFF1 antibody (abx001483) at dilution of 1/200 (40x lens).



Immunohistochemistry of paraffin-embedded human colon carcinoma using TFF1 antibody (abx001483) at dilution of 1/200 (40x lens).



Immunohistochemistry of paraffin-embedded human colon carcinoma using TFF1 antibody (abx001483) at dilution of 1/200 (40x lens).



Immunohistochemistry of paraffin-embedded human stomach using TFF1 antibody (abx001483) at dilution of 1/200 (40x lens).

TFF1 Antibody is a Rabbit Polyclonal antibody against TFF1. Members of the trefoil family are characterized by having at least one copy of the trefoil motif, a 40-amino acid domain that contains three conserved disulfides. They are stable secretory proteins expressed in gastrointestinal mucosa. Their functions are not defined, but they may protect the mucosa from insults, stabilize the mucus layer, and affect healing of the epithelium. This gene, which is expressed in the gastric mucosa, has also been studied because of its expression in human tumors. This gene and two other related trefoil family member genes are found in a cluster on chromosome 21.

**Target:** TFF1

**Reactivity:** Human, Mouse, Rat

Abbexa Ltd, Innovation Centre, Cambridge Science Park, Cambridge, CB4 0EY, UK  
Telephone: +44 (0) 1223 755950 - Fax: +44 (0) 1223 755951 - E-Mail: [info@abbexa.com](mailto:info@abbexa.com)

**Host:** Rabbit

**Clonality:** Polyclonal

**Tested Applications:** WB, IHC

**Recommended dilutions:** WB: 1/500 - 1/1000, IHC: 1/50 - 1/200. Optimal dilutions/concentrations should be determined by the end user.

**Immunogen:** Recombinant protein of human TFF1.

**Purification:** Affinity purified.

**Form:** Liquid

**Isotype:** IgG

**Conjugation:** Unconjugated

**Storage:** Aliquot and store at -20 °C. Avoid repeated freeze/thaw cycles.

**Molecular Weight:** Calculated MW: 9 kDa  
Observed MW: 12 kDa

**Swiss Prot:** [P04155](#)

**GeneID:** [7031](#)

**Gene Symbol:** TFF1

**Concentration:** > 1 mg/ml

**Buffer:** PBS, pH 7.3, 0.02% sodium azide, 50% glycerol.

**Note:** This product is for research use only.