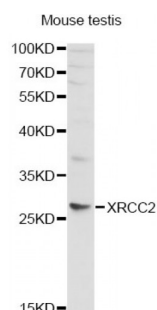


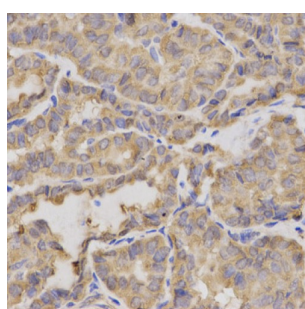
Abbexa Ltd, Innovation Centre, Cambridge Science Park, Cambridge, CB4 0EY, UK
Telephone: +44 (0) 1223 755950 - Fax: +44 (0) 1223 755951 - E-Mail: info@abbexa.com

X-Ray Repair Cross-Complementing Protein 2 (XRCC2) Antibody

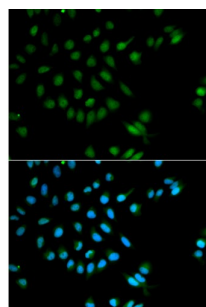
Catalogue No.: abx001491



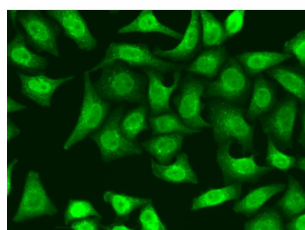
Western blot analysis of extracts of mouse testis, using XRCC2 antibody (abx001491) at 1/1000 dilution.



Immunohistochemistry of paraffin-embedded human thyroid cancer using XRCC2 antibody (abx001491) at dilution of 1/200 (40x lens).



Immunofluorescence analysis of MCF-7 cells using XRCC2 antibody (abx001491). Blue: DAPI for nuclear staining.



Immunofluorescence analysis of A549 cells using XRCC2 antibody (abx001491).

XRCC2 Antibody is a Rabbit Polyclonal antibody against XRCC2. This gene encodes a member of the RecA/Rad51-related protein family that participates in homologous recombination to maintain chromosome stability and repair DNA damage. This gene is involved in the repair of DNA double-strand breaks by homologous recombination and it functionally complements Chinese hamster *irs1*, a repair-deficient mutant that exhibits hypersensitivity to a number of different DNA-damaging agents. [provided by RefSeq, Jul 2008].

Target: XRCC2

Abbexa Ltd, Innovation Centre, Cambridge Science Park, Cambridge, CB4 0EY, UK
Telephone: +44 (0) 1223 755950 - Fax: +44 (0) 1223 755951 - E-Mail: info@abbexa.com

Reactivity: Human, Mouse, Rat

Host: Rabbit

Clonality: Polyclonal

Tested Applications: WB, IHC, IF/ICC

Recommended dilutions: WB: 1/500 - 1/2000, IHC: 1/50 - 1/200, IF/ICC: 1/50 - 1/200. Optimal dilutions/concentrations should be determined by the end user.

Immunogen: Recombinant protein of human XRCC2.

Purification: Affinity purified.

Form: Liquid

Isotype: IgG

Conjugation: Unconjugated

Storage: Aliquot and store at -20 °C. Avoid repeated freeze/thaw cycles.

Molecular Weight: Calculated MW: 31 kDa
Observed MW: 32 kDa

Swiss Prot: [O43543](#)

GeneID: [7516](#)

Gene Symbol: XRCC2

Concentration: > 1 mg/ml

Buffer: PBS, pH 7.3, 0.02% sodium azide, 50% glycerol.

Note: This product is for research use only.