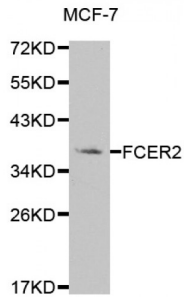


## Receptor II For The Fc Region of Immunoglobulin E (FCER2) Antibody

Catalogue No.: abx001520



Western blot analysis of extracts of MCF-7 cells, using FCER2 antibody (abx001520) at 1/1000 dilution.

FCER2 Antibody is a Rabbit Polyclonal antibody against FCER2. The protein encoded by this gene is a B-cell specific antigen, and a low-affinity receptor for IgE. It has essential roles in B cell growth and differentiation, and the regulation of IgE production. This protein also exists as a soluble secreted form, then functioning as a potent mitogenic growth factor. Alternatively spliced transcript variants encoding different isoforms have been described for this gene.[provided by RefSeq, Jul 2011].

**Target:** FCER2

**Reactivity:** Human

**Host:** Rabbit

**Clonality:** Polyclonal

**Tested Applications:** WB

**Recommended dilutions:** WB: 1/500 - 1/2000. Optimal dilutions/concentrations should be determined by the end user.

**Immunogen:** Recombinant protein of human FCER2.

**Purification:** Affinity purified.

**Form:** Liquid

**Isotype:** IgG

**Conjugation:** Unconjugated

**Storage:** Aliquot and store at -20 °C. Avoid repeated freeze/thaw cycles.

**Molecular Weight:** Calculated MW: 36 kDa  
Observed MW: 36 kDa

**Swiss Prot:** [P06734](#)

Abbexa Ltd, Innovation Centre, Cambridge Science Park, Cambridge, CB4 0EY, UK  
Telephone: +44 (0) 1223 755950 - Fax: +44 (0) 1223 755951 - E-Mail: [info@abbexa.com](mailto:info@abbexa.com)

**GeneID:** [2208](#)

**Gene Symbol:** FCER2

**Concentration:** > 1 mg/ml

**Buffer:** PBS, pH 7.3, 0.02% sodium azide, 50% glycerol.

**Note:** This product is for research use only.