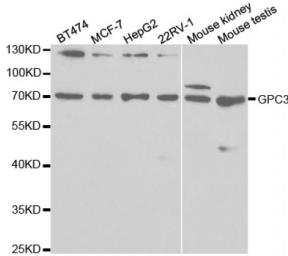


Abbexa Ltd, Innovation Centre, Cambridge Science Park, Cambridge, CB4 0EY, UK
 Telephone: +44 (0) 1223 755950 - Fax: +44 (0) 1223 755951 - E-Mail: info@abbexa.com

Glypican 3 (GPC3) Antibody

Catalogue No.: abx001589



Western blot analysis of extracts of various cell lines, using GPC3 antibody (abx001589) at 1/1000 dilution.

GPC3 Antibody is a Rabbit Polyclonal antibody against GPC3. Cell surface heparan sulfate proteoglycans are composed of a membrane-associated protein core substituted with a variable number of heparan sulfate chains. Members of the glypican-related integral membrane proteoglycan family (GRIPs) contain a core protein anchored to the cytoplasmic membrane via a glycosyl phosphatidylinositol linkage. These proteins may play a role in the control of cell division and growth regulation. The protein encoded by this gene can bind to and inhibit the dipeptidyl peptidase activity of CD26, and it can induce apoptosis in certain cell types. Deletion mutations in this gene are associated with Simpson-Golabi-Behmel syndrome, also known as Simpson dysmorphia syndrome. Alternative splicing results in multiple transcript variants.

- Target:** GPC3
- Reactivity:** Human, Mouse
- Host:** Rabbit
- Clonality:** Polyclonal
- Tested Applications:** WB, IHC
- Recommended dilutions:** WB: 1/500 - 1/2000, IHC: 1/50 - 1/200. Optimal dilutions/concentrations should be determined by the end user.
- Immunogen:** Recombinant protein of human GPC3.
- Purification:** Affinity purified.
- Form:** Liquid
- Isotype:** IgG
- Conjugation:** Unconjugated
- Storage:** Aliquot and store at -20 °C. Avoid repeated freeze/thaw cycles.

Abbexa Ltd, Innovation Centre, Cambridge Science Park, Cambridge, CB4 0EY, UK
Telephone: +44 (0) 1223 755950 - Fax: +44 (0) 1223 755951 - E-Mail: info@abbexa.com

Molecular Weight: Calculated MW: 59 kDa/65 kDa/68 kDa
Observed MW: 70 kDa

Swiss Prot: [P51654](#)

GeneID: [2719](#)

Gene Symbol: GPC3

Concentration: > 1 mg/ml

Buffer: PBS, pH 7.3, 0.02% sodium azide, 50% glycerol.

Note: This product is for research use only.