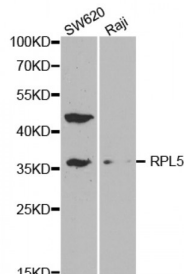


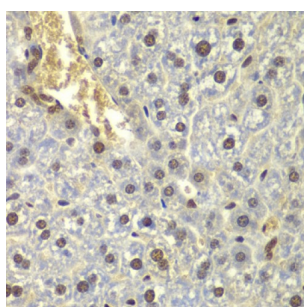
Abbexa Ltd, Innovation Centre, Cambridge Science Park, Cambridge, CB4 0EY, UK
Telephone: +44 (0) 1223 755950 - Fax: +44 (0) 1223 755951 - E-Mail: info@abbexa.com

Ribosomal Protein L5 (RPL5) Antibody

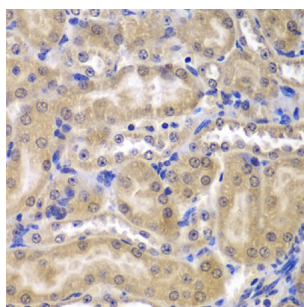
Catalogue No.: abx001611



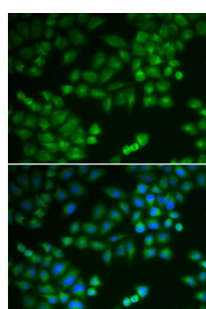
Western blot analysis of extracts of various cell lines, using RPL5 antibody (abx001611) at 1/1000 dilution.



Immunohistochemistry of paraffin-embedded mouse liver using RPL5 antibody (abx001611) at dilution of 1/200 (40x lens).



Immunohistochemistry of paraffin-embedded mouse kidney using RPL5 antibody (abx001611) at dilution of 1/200 (40x lens).



Immunofluorescence analysis of MCF-7 cells using RPL5 antibody (abx001611). Blue: DAPI for nuclear staining.

RPL5 Antibody is a Rabbit Polyclonal antibody against RPL5. Ribosomes, the organelles that catalyze protein synthesis, consist of a small 40S subunit and a large 60S subunit. Together these subunits are composed of 4 RNA species and approximately 80 structurally distinct proteins. This gene encodes a ribosomal protein that is a component of the 60S subunit. The protein belongs to the L18P family of ribosomal proteins. It is located in the cytoplasm. The protein binds 5S rRNA to form a stable complex called the 5S ribonucleoprotein particle (RNP), which is necessary for the transport of nonribosome-associated cytoplasmic 5S rRNA to the nucleolus for assembly into ribosomes. The protein interacts specifically with the beta subunit of casein kinase II. Variable expression of this gene in colorectal cancers compared to adjacent normal tissues has been observed, although no correlation between the level of expression and the severity of the disease has been found. This gene is co-transcribed with the small nucleolar RNA gene U21, which is located in its fifth intron. As is typical for genes encoding ribosomal proteins, there are

multiple processed pseudogenes of this gene dispersed through the genome.

Target:	RPL5
Reactivity:	Human, Mouse, Rat
Host:	Rabbit
Clonality:	Polyclonal
Tested Applications:	WB, IHC, IF/ICC
Recommended dilutions:	WB: 1/500 - 1/2000, IHC: 1/50 - 1/200, IF/ICC: 1/50 - 1/200. Optimal dilutions/concentrations should be determined by the end user.
Immunogen:	Recombinant protein of human RPL5.
Purification:	Affinity purified.
Form:	Liquid
Isotype:	IgG
Conjugation:	Unconjugated
Storage:	Aliquot and store at -20 °C. Avoid repeated freeze/thaw cycles.
Molecular Weight:	Calculated MW: 34 kDa Observed MW: 37 kDa
Swiss Prot:	P46777
GeneID:	6125
Gene Symbol:	RPL5
Concentration:	> 1 mg/ml
Buffer:	PBS, pH 7.3, 0.02% sodium azide, 50% glycerol.
Note:	This product is for research use only.