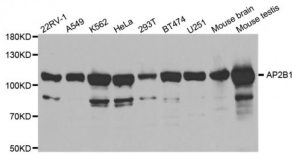


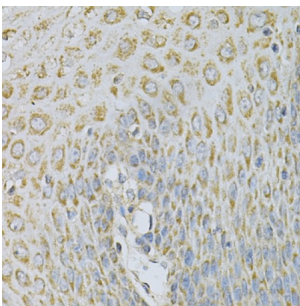
Abbexa Ltd, Innovation Centre, Cambridge Science Park, Cambridge, CB4 0EY, UK
 Telephone: +44 (0) 1223 755950 - Fax: +44 (0) 1223 755951 - E-Mail: info@abbexa.com

AP-2 Complex Subunit Beta (AP2B1) Antibody

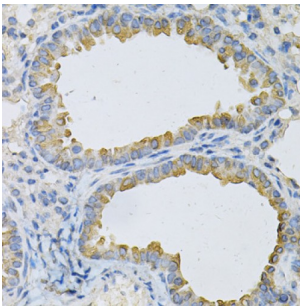
Catalogue No.: abx001623



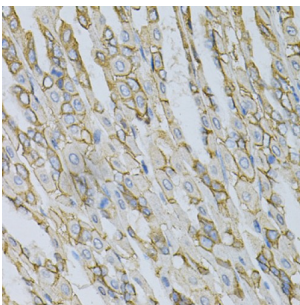
Western blot analysis of extracts of various cell lines, using AP2B1 antibody (abx001623) at 1/1000 dilution.



Immunohistochemistry of paraffin-embedded human esophagus using AP2B1 Antibody (abx001623) at dilution of 1/100 (40x lens).



Immunohistochemistry of paraffin-embedded mouse lung using AP2B1 Antibody (abx001623) at dilution of 1/100 (40x lens).



Immunohistochemistry of paraffin-embedded mouse stomach using AP2B1 Antibody (abx001623) at dilution of 1/100 (40x lens).

AP2B1 Antibody is a Rabbit Polyclonal antibody against AP2B1. The protein encoded by this gene is one of two large chain components of the assembly protein complex 2, which serves to link clathrin to receptors in coated vesicles. The encoded protein is found on the cytoplasmic face of coated vesicles in the plasma membrane. Two transcript variants encoding different isoforms have been found for this gene.

Target: AP2B1

Abbexa Ltd, Innovation Centre, Cambridge Science Park, Cambridge, CB4 0EY, UK
Telephone: +44 (0) 1223 755950 - Fax: +44 (0) 1223 755951 - E-Mail: info@abbexa.com

Reactivity: Human, Mouse

Host: Rabbit

Clonality: Polyclonal

Tested Applications: WB, IHC

Recommended dilutions: WB: 1/500 - 1/2000, IHC: 1/50 - 1/200. Optimal dilutions/concentrations should be determined by the end user.

Immunogen: Recombinant protein of human AP2B1.

Purification: Affinity purified.

Form: Liquid

Isotype: IgG

Conjugation: Unconjugated

Storage: Aliquot and store at -20 °C. Avoid repeated freeze/thaw cycles.

Molecular Weight: Calculated MW: 98 kDa/104 kDa/105 kDa
Observed MW: 110 kDa

Swiss Prot: [P63010](#)

GeneID: [163](#)

Gene Symbol: AP2B1

Concentration: > 1 mg/ml

Buffer: PBS, pH 7.3, 0.02% sodium azide, 50% glycerol.

Note: This product is for research use only.