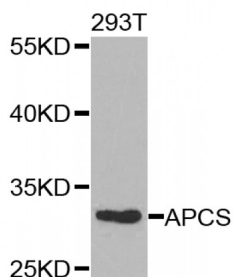


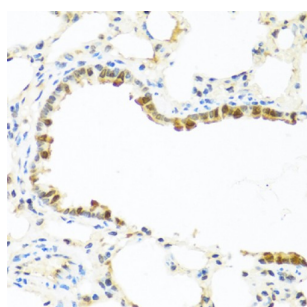
Abbexa Ltd, Innovation Centre, Cambridge Science Park, Cambridge, CB4 0EY, UK  
Telephone: +44 (0) 1223 755950 - Fax: +44 (0) 1223 755951 - E-Mail: [info@abbexa.com](mailto:info@abbexa.com)

## Serum Amyloid P-Component (APCS) Antibody

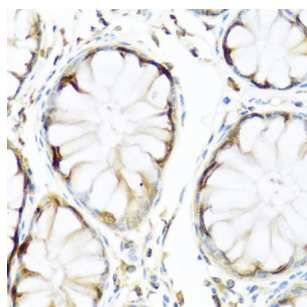
Catalogue No.: abx001624



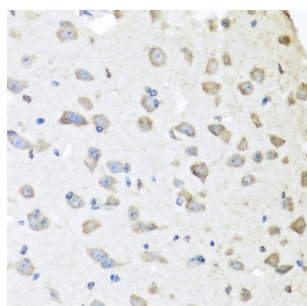
Western blot analysis of extracts of 293T cells, using APCS antibody (abx001624) at 1/1000 dilution.



Immunohistochemistry of paraffin-embedded rat lung using APCS antibody (abx001624) at dilution of 1/100 (40x lens).



Immunohistochemistry of paraffin-embedded human colon using APCS antibody (abx001624) at dilution of 1/100 (40x lens).



Immunohistochemistry of paraffin-embedded mouse brain using APCS antibody (abx001624) at dilution of 1/100 (40x lens).

APCS Antibody is a Rabbit Polyclonal antibody against APCS. The protein encoded by this gene is a glycoprotein, belonging to the pentraxin family of proteins, which has a characteristic pentameric organization. These family members have considerable sequence homology which is thought to be the result of gene duplication. The binding of the encoded protein to proteins in the pathological amyloid cross-beta fold suggests its possible role as a chaperone. This protein is also thought to control the degradation of chromatin. It has been demonstrated that this protein binds to apoptotic cells at an early stage, which raises the possibility that it is involved in dealing with apoptotic cells in vivo. [provided by RefSeq, Sep 2008].

Abbexa Ltd, Innovation Centre, Cambridge Science Park, Cambridge, CB4 0EY, UK  
Telephone: +44 (0) 1223 755950 - Fax: +44 (0) 1223 755951 - E-Mail: [info@abbexa.com](mailto:info@abbexa.com)

<b>Target:</b>	APCS
<b>Reactivity:</b>	Human, Mouse, Rat
<b>Host:</b>	Rabbit
<b>Clonality:</b>	Polyclonal
<b>Tested Applications:</b>	WB, IHC
<b>Recommended dilutions:</b>	WB: 1/500 - 1/2000, IHC: 1/50 - 1/100. Optimal dilutions/concentrations should be determined by the end user.
<b>Immunogen:</b>	Recombinant protein of human APCS.
<b>Purification:</b>	Affinity purified.
<b>Form:</b>	Liquid
<b>Isotype:</b>	IgG
<b>Conjugation:</b>	Unconjugated
<b>Storage:</b>	Aliquot and store at -20 °C. Avoid repeated freeze/thaw cycles.
<b>Molecular Weight:</b>	Calculated MW: 25 kDa Observed MW: 30 kDa
<b>Swiss Prot:</b>	<a href="#">P02743</a>
<b>GeneID:</b>	<a href="#">325</a>
<b>Gene Symbol:</b>	APCS
<b>Concentration:</b>	> 1 mg/ml
<b>Buffer:</b>	PBS, pH 7.3, 0.02% sodium azide, 50% glycerol.
<b>Note:</b>	This product is for research use only.