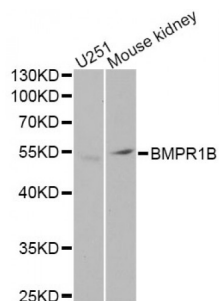
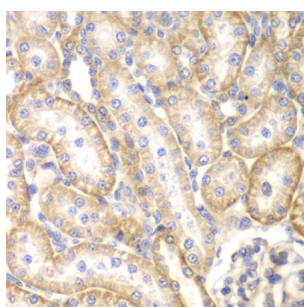


Bone Morphogenetic Protein Receptor 1B (BMPR1B) Antibody

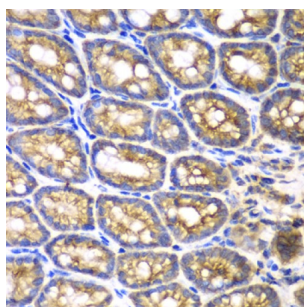
Catalogue No.: abx001630



Western blot analysis of extracts of various cell lines, using BMPR1B Antibody (abx001630) at 1/1000 dilution.



Immunohistochemistry of paraffin-embedded rat kidney using BMPR1B antibody (abx001630) at dilution of 1/200 (40x lens).



Immunohistochemistry of paraffin-embedded mouse Intestine using BMPR1B antibody (abx001630) at dilution of 1/200 (40x lens).

BMPR1B Antibody is a Rabbit Polyclonal antibody against BMPR1B. This gene encodes a member of the bone morphogenetic protein (BMP) receptor family of transmembrane serine/threonine kinases. The ligands of this receptor are BMPs, which are members of the TGF-beta superfamily. BMPs are involved in endochondral bone formation and embryogenesis. These proteins transduce their signals through the formation of heteromeric complexes of 2 different types of serine (threonine) kinase receptors: type I receptors of about 50-55 kD and type II receptors of about 70-80 kD. Type II receptors bind ligands in the absence of type I receptors, but they require their respective type I receptors for signaling, whereas type I receptors require their respective type II receptors for ligand binding. Mutations in this gene have been associated with primary pulmonary hypertension. Several transcript variants encoding two different isoforms have been found for this gene. [provided by RefSeq, Feb 2012].

Target: BMPR1B

Reactivity: Human, Mouse, Rat

Host: Rabbit

Abbexa Ltd, Innovation Centre, Cambridge Science Park, Cambridge, CB4 0EY, UK
Telephone: +44 (0) 1223 755950 - Fax: +44 (0) 1223 755951 - E-Mail: info@abbexa.com

Clonality: Polyclonal

Tested Applications: WB, IHC

Recommended dilutions: WB: 1/500 - 1/2000, IHC: 1/50 - 1/200. Optimal dilutions/concentrations should be determined by the end user.

Immunogen: Recombinant protein of human BMPR1B.

Purification: Affinity purified.

Form: Liquid

Isotype: IgG

Conjugation: Unconjugated

Storage: Aliquot and store at -20 °C. Avoid repeated freeze/thaw cycles.

Molecular Weight: Calculated MW: 56 kDa/60 kDa
Observed MW: 55 kDa

Swiss Prot: [O00238](#)

GeneID: [658](#)

Gene Symbol: BMPR1B

Concentration: > 1 mg/ml

Buffer: PBS, pH 7.3, 0.02% sodium azide, 50% glycerol.

Note: This product is for research use only.