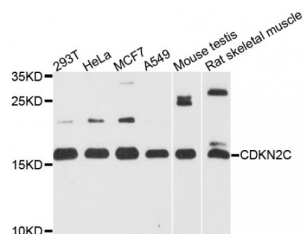


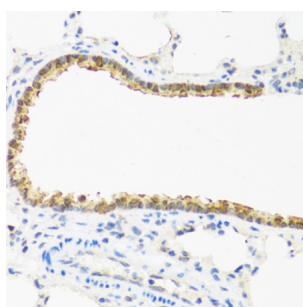
Abbexa Ltd, Innovation Centre, Cambridge Science Park, Cambridge, CB4 0EY, UK
Telephone: +44 (0) 1223 755950 - Fax: +44 (0) 1223 755951 - E-Mail: info@abbexa.com

Cyclin Dependent Kinase 4 Inhibitor C (CDKN2C) Antibody

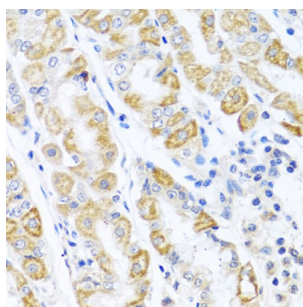
Catalogue No.: abx001659



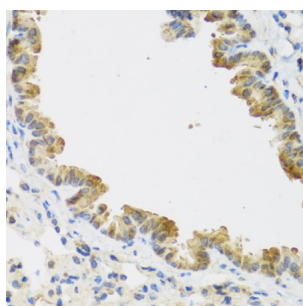
Western blot analysis of extracts of various cell lines, using CDKN2C antibody (abx001659) at 1/1000 dilution.



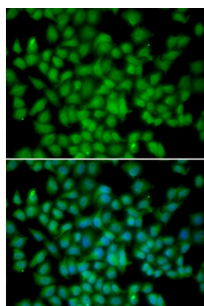
Immunohistochemistry of paraffin-embedded rat lung using CDKN2C antibody (abx001659) at dilution of 1/100 (40x lens).



Immunohistochemistry of paraffin-embedded human stomach using CDKN2C antibody (abx001659) at dilution of 1/100 (40x lens).



Immunohistochemistry of paraffin-embedded mouse lung using CDKN2C antibody (abx001659) at dilution of 1/100 (40x lens).



Immunofluorescence analysis of HeLa cells using CDKN2C antibody (abx001659). Blue: DAPI for nuclear staining.

CDKN2C Antibody is a Rabbit Polyclonal antibody against CDKN2C. The protein encoded by this gene is a member of the INK4

Abbexa Ltd, Innovation Centre, Cambridge Science Park, Cambridge, CB4 0EY, UK
Telephone: +44 (0) 1223 755950 - Fax: +44 (0) 1223 755951 - E-Mail: info@abbexa.com

family of cyclin-dependent kinase inhibitors. This protein has been shown to interact with CDK4 or CDK6, and prevent the activation of the CDK kinases, thus function as a cell growth regulator that controls cell cycle G1 progression. Ectopic expression of this gene was shown to suppress the growth of human cells in a manner that appears to correlate with the presence of a wild-type RB1 function. Studies in the knockout mice suggested the roles of this gene in regulating spermatogenesis, as well as in suppressing tumorigenesis. Two alternatively spliced transcript variants of this gene, which encode an identical protein, have been reported.

Target: CDKN2C

Reactivity: Human, Mouse, Rat

Host: Rabbit

Clonality: Polyclonal

Tested Applications: WB, IHC, IF/ICC

Recommended dilutions: WB: 1/500 - 1/2000, IHC: 1/50 - 1/100, IF/ICC: 1/50 - 1/100. Optimal dilutions/concentrations should be determined by the end user.

Immunogen: Recombinant protein of human CDKN2C.

Purification: Affinity purified.

Form: Liquid

Isotype: IgG

Conjugation: Unconjugated

Storage: Aliquot and store at -20 °C. Avoid repeated freeze/thaw cycles.

Molecular Weight: Calculated MW: 18 kDa
Observed MW: 18 kDa

Swiss Prot: [P42773](#)

GeneID: [1031](#)

Gene Symbol: CDKN2C

Concentration: > 1 mg/ml

Buffer: PBS, pH 7.3, 0.02% sodium azide, 50% glycerol.

Note: This product is for research use only.