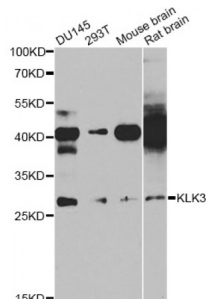


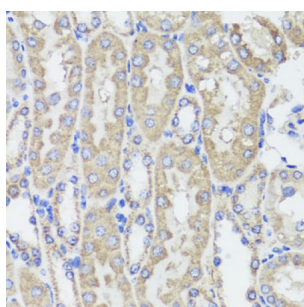
Abbexa Ltd, Innovation Centre, Cambridge Science Park, Cambridge, CB4 0EY, UK  
Telephone: +44 (0) 1223 755950 - Fax: +44 (0) 1223 755951 - E-Mail: [info@abbexa.com](mailto:info@abbexa.com)

## Prostate-Specific Antigen (KLK3) Antibody

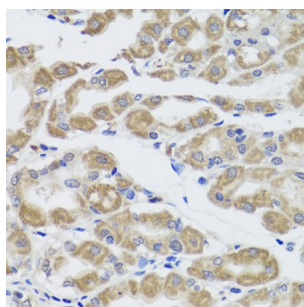
Catalogue No.: abx001669



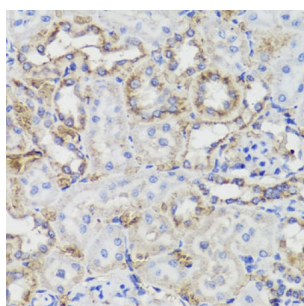
Western blot analysis of extracts of various cell lines, using KLK3 antibody (abx001669) at 1/1000 dilution.



Immunohistochemistry of paraffin-embedded mouse kidney using KLK3 antibody (abx001669) at dilution of 1/100 (40x lens).



Immunohistochemistry of paraffin-embedded human stomach using KLK3 antibody (abx001669) at dilution of 1/100 (40x lens).



Immunohistochemistry of paraffin-embedded rat kidney using KLK3 antibody (abx001669) at dilution of 1/100 (40x lens).

KLK3 Antibody is a Rabbit Polyclonal antibody against KLK3. Kallikreins are a subgroup of serine proteases having diverse physiological functions. Growing evidence suggests that many kallikreins are implicated in carcinogenesis and some have potential as novel cancer and other disease biomarkers. This gene is one of the fifteen kallikrein subfamily members located in a cluster on chromosome 19. Its protein product is a protease present in seminal plasma. It is thought to function normally in the liquefaction of seminal coagulum, presumably by hydrolysis of the high molecular mass seminal vesicle protein. Serum level of this protein, called PSA in the clinical setting, is useful in the diagnosis and monitoring of prostatic carcinoma. Alternate splicing of this gene generates several transcript variants encoding different isoforms.

Abbexa Ltd, Innovation Centre, Cambridge Science Park, Cambridge, CB4 0EY, UK  
Telephone: +44 (0) 1223 755950 - Fax: +44 (0) 1223 755951 - E-Mail: [info@abbexa.com](mailto:info@abbexa.com)

<b>Target:</b>	KLK3
<b>Reactivity:</b>	Human, Mouse, Rat
<b>Host:</b>	Rabbit
<b>Clonality:</b>	Polyclonal
<b>Tested Applications:</b>	WB, IHC
<b>Recommended dilutions:</b>	WB: 1/500 - 1/2000, IHC: 1/50 - 1/100. Optimal dilutions/concentrations should be determined by the end user.
<b>Immunogen:</b>	Recombinant protein of human KLK3.
<b>Purification:</b>	Affinity purified.
<b>Form:</b>	Liquid
<b>Isotype:</b>	IgG
<b>Conjugation:</b>	Unconjugated
<b>Storage:</b>	Aliquot and store at -20 °C. Avoid repeated freeze/thaw cycles.
<b>Molecular Weight:</b>	Calculated MW: 7 kDa/23 kDa/25 kDa/26 kDa/28 kDa Observed MW: 28 kDa
<b>Swiss Prot:</b>	<a href="#">P07288</a>
<b>GeneID:</b>	<a href="#">354</a>
<b>Gene Symbol:</b>	KLK3
<b>Concentration:</b>	> 1 mg/ml
<b>Buffer:</b>	PBS, pH 7.3, 0.02% sodium azide, 50% glycerol.
<b>Note:</b>	This product is for research use only.