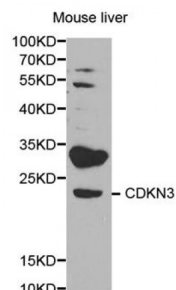


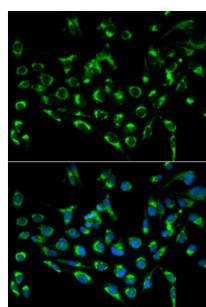
Abbexa Ltd, Innovation Centre, Cambridge Science Park, Cambridge, CB4 0EY, UK
Telephone: +44 (0) 1223 755950 - Fax: +44 (0) 1223 755951 - E-Mail: info@abbexa.com

Cyclin Dependent Kinase Inhibitor 3 (CDKN3) Antibody

Catalogue No.: abx001678



Western blot analysis of extracts of mouse liver, using CDKN3 antibody (abx001678) at 1/1000 dilution.



Immunofluorescence analysis of MCF-7 cells using CDKN3 antibody (abx001678). Blue: DAPI for nuclear staining.

CDKN3 Antibody is a Rabbit Polyclonal antibody against CDKN3. The protein encoded by this gene belongs to the dual specificity protein phosphatase family. It was identified as a cyclin-dependent kinase inhibitor, and has been shown to interact with, and dephosphorylate CDK2 kinase, thus prevent the activation of CDK2 kinase. This gene was reported to be deleted, mutated, or overexpressed in several kinds of cancers. Alternatively spliced transcript variants encoding different isoforms have been found for this gene. [provided by RefSeq, Aug 2008].

Target: CDKN3

Reactivity: Human, Mouse

Host: Rabbit

Clonality: Polyclonal

Tested Applications: WB, IHC, IF/ICC

Recommended dilutions: WB: 1/500 - 1/2000, IHC: 1/50 - 1/200, IF/ICC: 1/50 - 1/200. Optimal dilutions/concentrations should be determined by the end user.

Immunogen: Recombinant protein of human CDKN3.

Purification: Affinity purified.

Form: Liquid

Abbexa Ltd, Innovation Centre, Cambridge Science Park, Cambridge, CB4 0EY, UK
Telephone: +44 (0) 1223 755950 - Fax: +44 (0) 1223 755951 - E-Mail: info@abbexa.com

Isotype:	IgG
Conjugation:	Unconjugated
Storage:	Aliquot and store at -20 °C. Avoid repeated freeze/thaw cycles.
Molecular Weight:	Calculated MW: 19 kDa/23 kDa Observed MW: 23 kDa
Swiss Prot:	Q16667
GeneID:	1033
Gene Symbol:	CDKN3
Concentration:	> 1 mg/ml
Buffer:	PBS, pH 7.3, 0.02% sodium azide, 50% glycerol.
Note:	This product is for research use only.