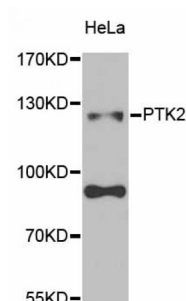


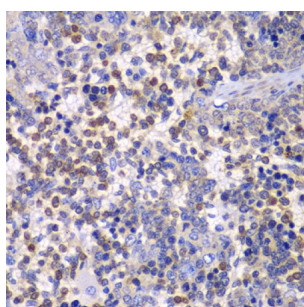
Abbexa Ltd, Innovation Centre, Cambridge Science Park, Cambridge, CB4 0EY, UK  
Telephone: +44 (0) 1223 755950 - Fax: +44 (0) 1223 755951 - E-Mail: [info@abbexa.com](mailto:info@abbexa.com)

## Protein Tyrosine Kinase 2 Beta (PTK2) Antibody

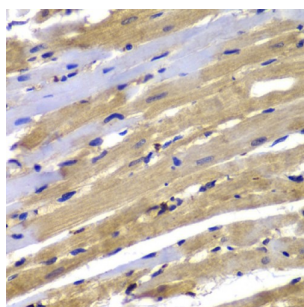
Catalogue No.: abx001726



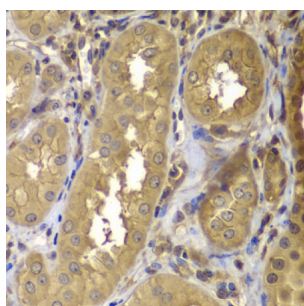
Western blot analysis of extracts of HeLa cells, using PTK2 antibody (abx001726) at 1/1000 dilution.



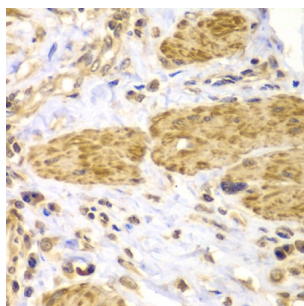
Immunohistochemistry of paraffin-embedded rat spleen using PTK2 antibody (abx001726) at dilution of 1/100 (40x lens).



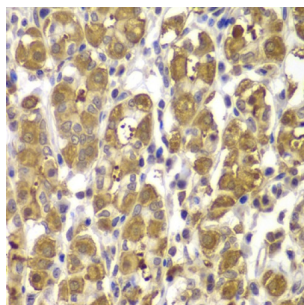
Immunohistochemistry of paraffin-embedded rat heart using PTK2 antibody (abx001726) at dilution of 1/100 (40x lens).



Immunohistochemistry of paraffin-embedded human kidney using PTK2 antibody (abx001726) at dilution of 1/100 (40x lens).



Immunohistochemistry of paraffin-embedded human gastric cancer using PTK2 antibody (abx001726) at dilution of 1/100 (40x lens).



Immunohistochemistry of paraffin-embedded human gastric injury using PTK2 antibody (abx001726) at dilution of 1/100 (40x lens).

PTK2 Antibody is a Rabbit Polyclonal antibody against PTK2. This gene encodes a cytoplasmic protein tyrosine kinase which is found concentrated in the focal adhesions that form between cells growing in the presence of extracellular matrix constituents. The encoded protein is a member of the FAK subfamily of protein tyrosine kinases but lacks significant sequence similarity to kinases from other subfamilies. Activation of this gene may be an important early step in cell growth and intracellular signal transduction pathways triggered in response to certain neural peptides or to cell interactions with the extracellular matrix. Several transcript variants encoding different isoforms have been found for this gene, but the full-length natures of only three of them have been determined.

**Target:** PTK2

**Reactivity:** Human, Rat

**Host:** Rabbit

**Clonality:** Polyclonal

**Tested Applications:** WB, IHC

**Recommended dilutions:** WB: 1/1000 - 1/2000, IHC: 1/50 - 1/100. Optimal dilutions/concentrations should be determined by the end user.

**Immunogen:** A synthetic peptide of human PTK2.

**Purification:** Affinity purified.

**Form:** Liquid

**Isotype:** IgG

**Conjugation:** Unconjugated

**Storage:** Aliquot and store at -20 °C. Avoid repeated freeze/thaw cycles.

**Molecular Weight:** Calculated MW: 39 kDa/48 kDa/63 kDa/99 kDa/114 kDa/119 kDa/120 kDa  
Observed MW: 120 kDa

Abbexa Ltd, Innovation Centre, Cambridge Science Park, Cambridge, CB4 0EY, UK  
Telephone: +44 (0) 1223 755950 - Fax: +44 (0) 1223 755951 - E-Mail: [info@abbexa.com](mailto:info@abbexa.com)

**Swiss Prot:** [Q05397](#)

**GeneID:** [5747](#)

**Gene Symbol:** PTK2

**Concentration:** > 1 mg/ml

**Buffer:** PBS, pH 7.3, 0.02% sodium azide, 50% glycerol.

**Note:** This product is for research use only.