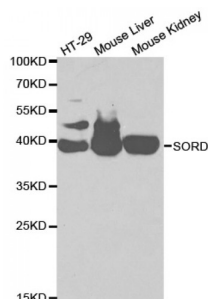


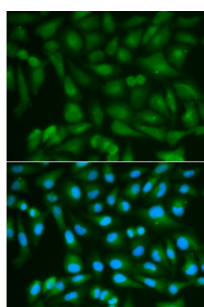
Abbexa Ltd, Innovation Centre, Cambridge Science Park, Cambridge, CB4 0EY, UK
Telephone: +44 (0) 1223 755950 - Fax: +44 (0) 1223 755951 - E-Mail: info@abbexa.com

Sorbitol Dehydrogenase (SORD) Antibody

Catalogue No.: abx001730



Western blot analysis of extracts of various cell lines, using SORD antibody (abx001730) at 1/1000 dilution.



Immunofluorescence analysis of MCF-7 cells using SORD antibody (abx001730). Blue: DAPI for nuclear staining.

SORD Antibody is a Rabbit Polyclonal antibody against SORD. SORD(Sorbitol dehydrogenase) is also named as L-iditol 2-dehydrogenase and belongs to the zinc-containing alcohol dehydrogenase family. It catalyzes the interconversion of polyols and their corresponding ketoses, and together with aldose reductase, makes up the sorbitol pathway that is believed to play an important role in the development of diabetic complications. This protein can form a homotetramer(PMID:12962626).

Target: SORD

Reactivity: Human, Mouse

Host: Rabbit

Clonality: Polyclonal

Tested Applications: WB, IF/ICC

Recommended dilutions: WB: 1/500 - 1/2000, IF/ICC: 1/50 - 1/200. Optimal dilutions/concentrations should be determined by the end user.

Immunogen: Recombinant protein of human SORD.

Purification: Affinity purified.

Form: Liquid

Abbexa Ltd, Innovation Centre, Cambridge Science Park, Cambridge, CB4 0EY, UK
Telephone: +44 (0) 1223 755950 - Fax: +44 (0) 1223 755951 - E-Mail: info@abbexa.com

Isotype:	IgG
Conjugation:	Unconjugated
Storage:	Aliquot and store at -20 °C. Avoid repeated freeze/thaw cycles.
Molecular Weight:	Calculated MW: 10 kDa/38 kDa Observed MW: 38 kDa
Swiss Prot:	Q00796
GeneID:	6652
Gene Symbol:	SORD
Concentration:	> 1 mg/ml
Buffer:	PBS, pH 7.3, 0.02% sodium azide, 50% glycerol.
Note:	This product is for research use only.