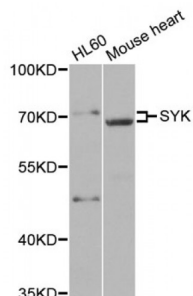


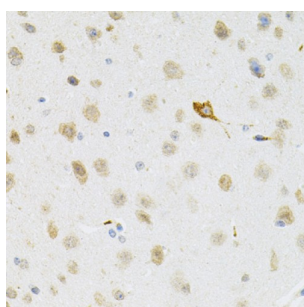
Abbexa Ltd, Innovation Centre, Cambridge Science Park, Cambridge, CB4 0EY, UK
Telephone: +44 (0) 1223 755950 - Fax: +44 (0) 1223 755951 - E-Mail: info@abbexa.com

Spleen Associated Tyrosine Kinase (SYK) Antibody

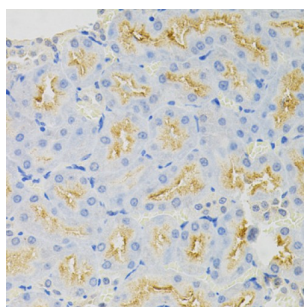
Catalogue No.: abx001735



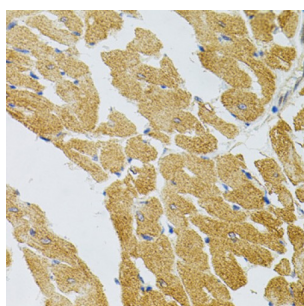
Western blot analysis of extracts of various cell lines, using SYK antibody (abx001735) at 1/500 dilution.



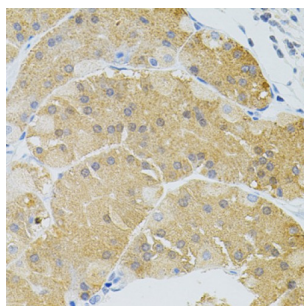
Immunohistochemistry of paraffin-embedded mouse brain using SYK Antibody (abx001735) at dilution of 1/100 (40x lens).



Immunohistochemistry of paraffin-embedded rat kidney using SYK Antibody (abx001735) at dilution of 1/100 (40x lens).



Immunohistochemistry of paraffin-embedded rat heart using SYK Antibody (abx001735) at dilution of 1/100 (40x lens).



Immunohistochemistry of paraffin-embedded human stomach using SYK Antibody (abx001735) at dilution of 1/100 (40x lens).

SYK Antibody is a Rabbit Polyclonal antibody against SYK. This gene encodes a member of the family of non-receptor type Tyr

Abbexa Ltd, Innovation Centre, Cambridge Science Park, Cambridge, CB4 0EY, UK
Telephone: +44 (0) 1223 755950 - Fax: +44 (0) 1223 755951 - E-Mail: info@abbexa.com

protein kinases. This protein is widely expressed in hematopoietic cells and is involved in coupling activated immunoreceptors to downstream signaling events that mediate diverse cellular responses, including proliferation, differentiation, and phagocytosis. It is thought to be a modulator of epithelial cell growth and a potential tumour suppressor in human breast carcinomas. Alternatively spliced transcript variants encoding different isoforms have been found for this gene.

Target: SYK

Reactivity: Human, Mouse, Rat

Host: Rabbit

Clonality: Polyclonal

Tested Applications: WB, IHC

Recommended dilutions: WB: 1/500 - 1/2000, IHC: 1/50 - 1/100. Optimal dilutions/concentrations should be determined by the end user.

Immunogen: Recombinant protein of human SYK.

Purification: Affinity purified.

Form: Liquid

Isotype: IgG

Conjugation: Unconjugated

Storage: Aliquot and store at -20 °C. Avoid repeated freeze/thaw cycles.

Molecular Weight: Calculated MW: 69 kDa/72 kDa
Observed MW: 69 kDa

Swiss Prot: [P43405](#)

GeneID: [6850](#)

Gene Symbol: SYK

Concentration: > 1 mg/ml

Buffer: PBS, pH 7.3, 0.02% sodium azide, 50% glycerol.

Note: This product is for research use only.