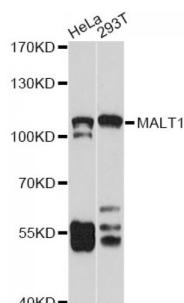


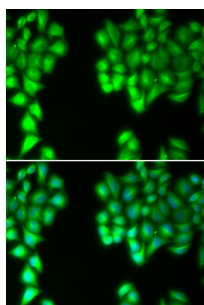
Abbexa Ltd, Innovation Centre, Cambridge Science Park, Cambridge, CB4 0EY, UK
Telephone: +44 (0) 1223 755950 - Fax: +44 (0) 1223 755951 - E-Mail: info@abbexa.com

Mucosa-Associated Lymphoid Tissue Lymphoma Translocation Protein 1 (MALT1) Antibody

Catalogue No.: abx001756



Western blot analysis of extracts of various cell lines, using MALT1 antibody (abx001756) at 1/1000 dilution.



Immunofluorescence analysis of U2OS cells using MALT1 antibody (abx001756). Blue: DAPI for nuclear staining.

MALT1 Antibody is a Rabbit Polyclonal antibody against MALT1. This gene has been found to be recurrently rearranged in chromosomal translocation with two other genes - baculoviral IAP repeat-containing protein 3 (also known as apoptosis inhibitor 2) and immunoglobulin heavy chain locus - in mucosa-associated lymphoid tissue lymphomas. The protein encoded by this gene may play a role in NF-kappaB activation. Two alternatively spliced transcript variants encoding different isoforms have been described for this gene.

Target: MALT1

Reactivity: Human, Mouse

Host: Rabbit

Clonality: Polyclonal

Tested Applications: WB, IF/ICC

Recommended dilutions: WB: 1/500 - 1/2000, IF/ICC: 1/50 - 1/200. Optimal dilutions/concentrations should be determined by the end user.

Immunogen: Recombinant protein of human MALT1.

Purification: Affinity purified.

Abbexa Ltd, Innovation Centre, Cambridge Science Park, Cambridge, CB4 0EY, UK
Telephone: +44 (0) 1223 755950 - Fax: +44 (0) 1223 755951 - E-Mail: info@abbexa.com

Form:	Liquid
Isotype:	IgG
Conjugation:	Unconjugated
Storage:	Aliquot and store at -20 °C. Avoid repeated freeze/thaw cycles.
Molecular Weight:	Calculated MW: 91 kDa/92 kDa Observed MW: 102 kDa
Swiss Prot:	Q9UDY8
GeneID:	10892
Gene Symbol:	MALT1
Concentration:	> 1 mg/ml
Buffer:	PBS, pH 7.3, 0.02% sodium azide, 50% glycerol.
Note:	This product is for research use only.