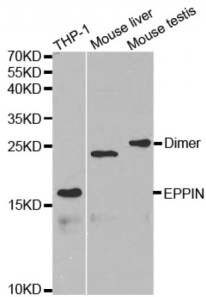


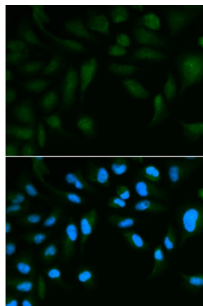
Abbexa Ltd, Innovation Centre, Cambridge Science Park, Cambridge, CB4 0EY, UK
 Telephone: +44 (0) 1223 755950 - Fax: +44 (0) 1223 755951 - E-Mail: info@abbexa.com

Serine Protease Inhibitor-Like With Kunitz And WAP Domains 1 (SPINLW1) Antibody

Catalogue No.: abx001761



Western blot analysis of extracts of various cell lines, using EPPIN antibody (abx001761) at 1/1000 dilution.



Immunofluorescence analysis of HepG2 cells using EPPIN antibody (abx001761). Blue: DAPI for nuclear staining.

SPINLW1 Antibody is a Rabbit Polyclonal antibody against SPINLW1. This gene encodes an epididymal protease inhibitor, which contains both kunitz-type and WAP-type four-disulfide core (WFDC) protease inhibitor consensus sequences. Most WFDC genes are localized to chromosome 20q12-q13 in two clusters: centromeric and telomeric. This gene is a member of the WFDC gene family and belongs to the telomeric cluster. The protein can inhibit human sperm motility, and polymorphisms in this gene are associated with male infertility. Read-through transcription also exists between this gene and the downstream WFDC6 (WAP four-disulfide core domain 6) gene. [provided by RefSeq, Nov 2010].

Target: SPINLW1

Reactivity: Human, Mouse

Host: Rabbit

Clonality: Polyclonal

Tested Applications: WB, IF/ICC

Recommended dilutions: WB: 1/500 - 1/2000, IF/ICC: 1/50 - 1/200. Optimal dilutions/concentrations should be determined by the end user.

Immunogen: Recombinant protein of human SPINLW1.

Purification: Affinity purified.

Abbexa Ltd, Innovation Centre, Cambridge Science Park, Cambridge, CB4 0EY, UK
Telephone: +44 (0) 1223 755950 - Fax: +44 (0) 1223 755951 - E-Mail: info@abbexa.com

Form:	Liquid
Isotype:	IgG
Conjugation:	Unconjugated
Storage:	Aliquot and store at -20 °C. Avoid repeated freeze/thaw cycles.
Molecular Weight:	Calculated MW: 13 kDa/15 kDa/20 kDa Observed MW: 17 kDa
Swiss Prot:	O95925
GeneID:	57119
Gene Symbol:	EPPIN
Concentration:	2.74 mg/ml
Buffer:	PBS, pH 7.3, 0.02% sodium azide, 50% glycerol.
Note:	This product is for research use only.