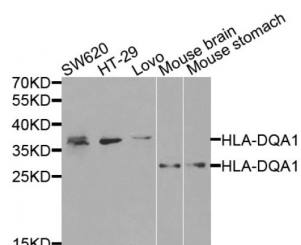


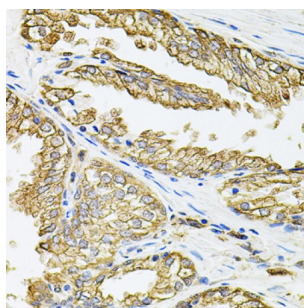
Abbexa Ltd, Innovation Centre, Cambridge Science Park, Cambridge, CB4 0EY, UK
Telephone: +44 (0) 1223 755950 - Fax: +44 (0) 1223 755951 - E-Mail: info@abbexa.com

HLA Class II Histocompatibility Antigen, DQ Alpha 1 Chain (HLA-DQA1) Antibody

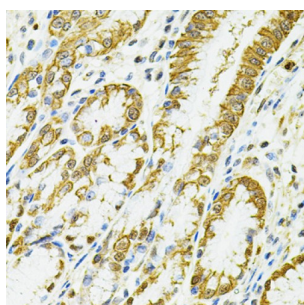
Catalogue No.: abx001780



Western blot analysis of extracts of various cell lines, using HLA-DQA1 antibody (abx001780) at 1/1000 dilution.



Immunohistochemistry of paraffin-embedded human prostate using HLA-DQA1 antibody (abx001780) at dilution of 1/100 (40x lens).



Immunohistochemistry of paraffin-embedded human esophagus using HLA-DQA1 antibody (abx001780) at dilution of 1/100 (40x lens).

HLA-DQA1 Antibody is a Rabbit Polyclonal antibody against HLA-DQA1. HLA-DQA1 belongs to the HLA class II alpha chain paralogues. The class II molecule is a heterodimer consisting of an alpha (DQA) and a beta chain (DQB), both anchored in the membrane. It plays a central role in the immune system by presenting peptides derived from extracellular proteins. Class II molecules are expressed in antigen presenting cells (APC: B Lymphocytes, dendritic cells, macrophages). The alpha chain is approximately 33-35 kDa. It is encoded by 5 exons; exon 1 encodes the leader peptide, exons 2 and 3 encode the two extracellular domains, and exon 4 encodes the transmembrane domain and the cytoplasmic tail. Within the DQ molecule both the alpha chain and the beta chain contain the polymorphisms specifying the peptide binding specificities, resulting in up to four different molecules. Typing for these polymorphisms is routinely done for bone marrow transplantation.

Target: HLA-DQA1

Reactivity: Human, Mouse

Host: Rabbit

Abbexa Ltd, Innovation Centre, Cambridge Science Park, Cambridge, CB4 0EY, UK
Telephone: +44 (0) 1223 755950 - Fax: +44 (0) 1223 755951 - E-Mail: info@abbexa.com

Clonality: Polyclonal

Tested Applications: WB, IHC

Recommended dilutions: WB: 1/500 - 1/2000, IHC: 1/50 - 1/200. Optimal dilutions/concentrations should be determined by the end user.

Immunogen: Recombinant protein of human HLA-DQA1.

Purification: Affinity purified.

Form: Liquid

Isotype: IgG

Conjugation: Unconjugated

Storage: Aliquot and store at -20 °C. Avoid repeated freeze/thaw cycles.

Molecular Weight: Calculated MW: 27 kDa
Observed MW: 28 kDa

Swiss Prot: [P01909](#)

GeneID: [3117](#)

Gene Symbol: HLA-DQA1

Concentration: > 1 mg/ml

Buffer: PBS, pH 7.3, 0.02% sodium azide, 50% glycerol.

Note: This product is for research use only.