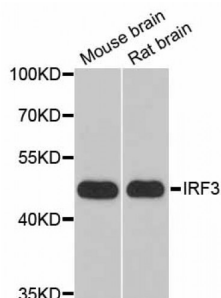


Abbexa Ltd, Innovation Centre, Cambridge Science Park, Cambridge, CB4 0EY, UK
Telephone: +44 (0) 1223 755950 - Fax: +44 (0) 1223 755951 - E-Mail: info@abbexa.com

Interferon Regulatory Factor 3 (IRF3) Antibody

Catalogue No.: abx001784



Western blot analysis of extracts of various cell lines, using IRF3 antibody (abx001784) at 1/1000 dilution.

IRF3 Antibody is a Rabbit Polyclonal antibody against IRF3. This gene encodes a member of the interferon regulatory transcription factor (IRF) family. The encoded protein is found in an inactive cytoplasmic form that upon serine/threonine phosphorylation forms a complex with CREBBP. This complex translocates to the nucleus and activates the transcription of interferons alpha and beta, as well as other interferon-induced genes. Alternatively spliced transcript variants encoding multiple isoforms have been observed for this gene.

Target:	IRF3
Reactivity:	Mouse, Rat
Host:	Rabbit
Clonality:	Polyclonal
Tested Applications:	WB

Recommended dilutions: WB: 1/500 - 1/2000. Optimal dilutions/concentrations should be determined by the end user.

Immunogen:	Recombinant protein of human IRF3.
Purification:	Affinity purified.
Form:	Liquid
Isotype:	IgG
Conjugation:	Unconjugated
Storage:	Aliquot and store at -20 °C. Avoid repeated freeze/thaw cycles.
Molecular Weight:	Calculated MW: 12 kDa/16 kDa/33 kDa/47 kDa/49 kDa Observed MW: 47 kDa

Abbexa Ltd, Innovation Centre, Cambridge Science Park, Cambridge, CB4 0EY, UK
Telephone: +44 (0) 1223 755950 - Fax: +44 (0) 1223 755951 - E-Mail: info@abbexa.com

Swiss Prot: [Q14653](#)

GeneID: [3661](#)

Gene Symbol: IRF3

Concentration: 1.76 mg/ml

Buffer: PBS, pH 7.3, 0.02% sodium azide, 50% glycerol.

Note: This product is for research use only.