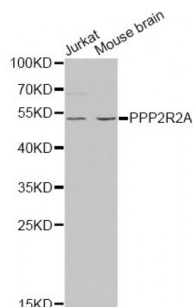


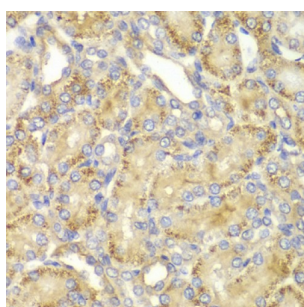
Abbexa Ltd, Innovation Centre, Cambridge Science Park, Cambridge, CB4 0EY, UK
Telephone: +44 (0) 1223 755950 - Fax: +44 (0) 1223 755951 - E-Mail: info@abbexa.com

Protein Phosphatase 2 Regulatory Subunit Balpha (PPP2R2A) Antibody

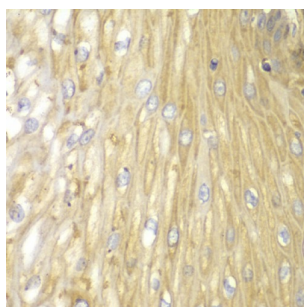
Catalogue No.: abx001797



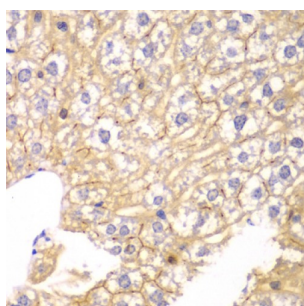
Western blot analysis of extracts of various cell lines, using PPP2R2A antibody (abx001797) at 1/1000 dilution.



Immunohistochemistry of paraffin-embedded rat kidney using PPP2R2A antibody (abx001797) at dilution of 1/100 (40x lens).



Immunohistochemistry of paraffin-embedded human esophagus using PPP2R2A antibody (abx001797) at dilution of 1/100 (40x lens).



Immunohistochemistry of paraffin-embedded mouse liver using PPP2R2A antibody (abx001797) at dilution of 1/100 (40x lens).

PPP2R2A Antibody is a Rabbit Polyclonal antibody against PPP2R2A. The product of this gene belongs to the phosphatase 2 regulatory subunit B family. Protein phosphatase 2 is one of the four major Ser/Thr phosphatases, and it is implicated in the negative control of cell growth and division. It consists of a common heteromeric core enzyme, which is composed of a catalytic subunit and a constant regulatory subunit, that associates with a variety of regulatory subunits. The B regulatory subunit might modulate substrate selectivity and catalytic activity. This gene encodes an alpha isoform of the regulatory subunit B55 subfamily. Alternatively spliced transcript variants have been described.

Abbexa Ltd, Innovation Centre, Cambridge Science Park, Cambridge, CB4 0EY, UK
Telephone: +44 (0) 1223 755950 - Fax: +44 (0) 1223 755951 - E-Mail: info@abbexa.com

Target: PPP2R2A

Reactivity: Human, Mouse, Rat

Host: Rabbit

Clonality: Polyclonal

Tested Applications: WB, IHC

Recommended dilutions: WB: 1/500 - 1/2000, IHC: 1/50 - 1/200. Optimal dilutions/concentrations should be determined by the end user.

Immunogen: Recombinant protein of human PPP2R2A.

Purification: Affinity purified.

Form: Liquid

Isotype: IgG

Conjugation: Unconjugated

Storage: Aliquot and store at -20 °C. Avoid repeated freeze/thaw cycles.

Molecular Weight: Calculated MW: 51 kDa/53 kDa
Observed MW: 52 kDa

Swiss Prot: [P63151](#)

GeneID: [5520](#)

Gene Symbol: PPP2R2A

Concentration: > 1 mg/ml

Buffer: PBS, pH 7.3, 0.02% sodium azide, 50% glycerol.

Note: This product is for research use only.