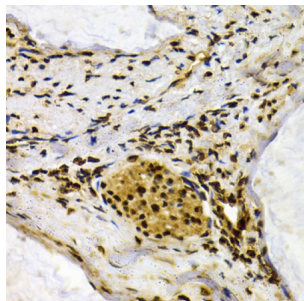


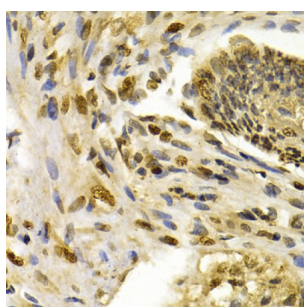
Abbexa Ltd, Innovation Centre, Cambridge Science Park, Cambridge, CB4 0EY, UK
Telephone: +44 (0) 1223 755950 - Fax: +44 (0) 1223 755951 - E-Mail: info@abbexa.com

Interferon Induced With Helicase C Domain 1 (IFIH1) Antibody

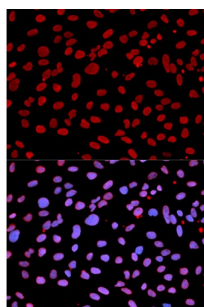
Catalogue No.: abx001815



Immunohistochemistry of paraffin-embedded human colon carcinoma using IFIH1 antibody (abx001815) at dilution of 1/200 (40x lens).



Immunohistochemistry of paraffin-embedded human esophageal cancer using IFIH1 antibody (abx001815) at dilution of 1/200 (40x lens).



Immunofluorescence analysis of U2OS cells using IFIH1 antibody (abx001815). Blue: DAPI for nuclear staining.

IFIH1 Antibody is a Rabbit Polyclonal antibody against IFIH1. DEAD box proteins, characterized by the conserved motif Asp-Glu-Ala-Asp (DEAD), are putative RNA helicases. They are implicated in a number of cellular processes involving alteration of RNA secondary structure such as translation initiation, nuclear and mitochondrial splicing, and ribosome and spliceosome assembly. Based on their distribution patterns, some members of this family are believed to be involved in embryogenesis, spermatogenesis, and cellular growth and division. This gene encodes a DEAD box protein that is upregulated in response to treatment with beta-interferon and a protein kinase C-activating compound, mezerein. Irreversible reprogramming of melanomas can be achieved by treatment with both these agents; treatment with either agent alone only achieves reversible differentiation. Genetic variation in this gene is associated with diabetes mellitus insulin-dependent type 19.

Target:	IFIH1
Reactivity:	Human
Host:	Rabbit
Clonality:	Polyclonal

Abbexa Ltd, Innovation Centre, Cambridge Science Park, Cambridge, CB4 0EY, UK
Telephone: +44 (0) 1223 755950 - Fax: +44 (0) 1223 755951 - E-Mail: info@abbexa.com

Tested Applications: WB, IHC, IF/ICC

Recommended dilutions: WB: 1/500 - 1/2000, IHC: 1/50 - 1/200, IF/ICC: 1/50 - 1/200. Optimal dilutions/concentrations should be determined by the end user.

Immunogen: Recombinant protein of human IFIH1.

Purification: Affinity purified.

Form: Liquid

Isotype: IgG

Conjugation: Unconjugated

Storage: Aliquot and store at -20 °C. Avoid repeated freeze/thaw cycles.

Molecular Weight: Calculated MW: 25 kDa/116 kDa
Observed MW: Refer to figures

Swiss Prot: [Q9BYX4](#)

GeneID: [64135](#)

Gene Symbol: IFIH1

Concentration: 0.75 mg/ml

Buffer: PBS, pH 7.3, 0.02% sodium azide, 50% glycerol.

Note: This product is for research use only.