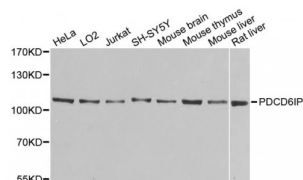


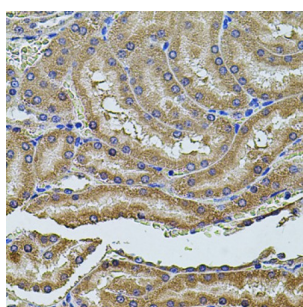
Abbexa Ltd, Innovation Centre, Cambridge Science Park, Cambridge, CB4 0EY, UK  
Telephone: +44 (0) 1223 755950 - Fax: +44 (0) 1223 755951 - E-Mail: [info@abbexa.com](mailto:info@abbexa.com)

## ALG-2-Interacting Protein X (ALIX) Antibody

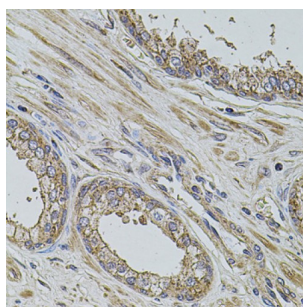
Catalogue No.: abx001822



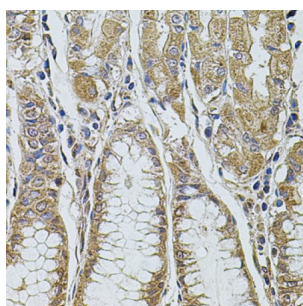
Western blot analysis of extracts of various cell lines, using PDGCD6IP antibody (abx001822) at 1/1000 dilution.



Immunohistochemistry of paraffin-embedded rat kidney using PDGCD6IP antibody (abx001822) at dilution of 1/100 (40x lens).



Immunohistochemistry of paraffin-embedded human prostate using PDGCD6IP antibody (abx001822) at dilution of 1/100 (40x lens).



Immunohistochemistry of paraffin-embedded human stomach using PDGCD6IP antibody (abx001822) at dilution of 1/100 (40x lens).

ALIX Antibody is a Rabbit Polyclonal antibody against ALIX. This gene encodes a protein that functions within the ESCRT pathway in the abscission stage of cytokinesis, in intraluminal endosomal vesicle formation, and in enveloped virus budding. Studies using mouse cells have shown that overexpression of this protein can block apoptosis. In addition, the product of this gene binds to the product of the PDGCD6 gene, a protein required for apoptosis, in a calcium-dependent manner. This gene product also binds to endophilins, proteins that regulate membrane shape during endocytosis. Overexpression of this gene product and endophilins results in cytoplasmic vacuolization, which may be partly responsible for the protection against cell death. Several alternatively spliced transcript variants encoding different isoforms have been found for this gene. Related pseudogenes have been identified on chromosome 15.

Abbexa Ltd, Innovation Centre, Cambridge Science Park, Cambridge, CB4 0EY, UK  
Telephone: +44 (0) 1223 755950 - Fax: +44 (0) 1223 755951 - E-Mail: [info@abbexa.com](mailto:info@abbexa.com)

<b>Target:</b>	ALIX
<b>Reactivity:</b>	Human, Mouse, Rat
<b>Host:</b>	Rabbit
<b>Clonality:</b>	Polyclonal
<b>Tested Applications:</b>	WB, IHC
<b>Recommended dilutions:</b>	WB: 1/200 - 1/2000, IHC: 1/50 - 1/200. Optimal dilutions/concentrations should be determined by the end user.
<b>Immunogen:</b>	Recombinant fusion protein of human ALIX.
<b>Purification:</b>	Affinity purified.
<b>Form:</b>	Liquid
<b>Isotype:</b>	IgG
<b>Conjugation:</b>	Unconjugated
<b>Storage:</b>	Aliquot and store at -20 °C. Avoid repeated freeze/thaw cycles.
<b>Molecular Weight:</b>	Calculated MW: 30 kDa/96 kDa Observed MW: 109 kDa
<b>Swiss Prot:</b>	<a href="#">Q8WUM4</a>
<b>GeneID:</b>	<a href="#">10015</a>
<b>Gene Symbol:</b>	PDCD6IP
<b>Concentration:</b>	> 1 mg/ml
<b>Buffer:</b>	PBS, pH 7.3, 0.02% sodium azide, 50% glycerol.
<b>Note:</b>	This product is for research use only.