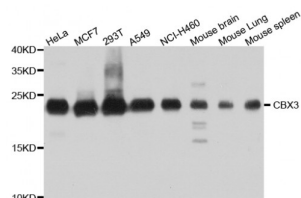


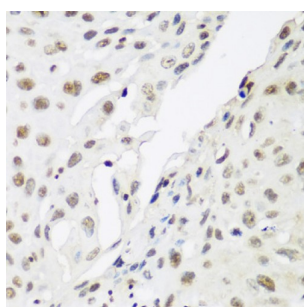
Abbexa Ltd, Innovation Centre, Cambridge Science Park, Cambridge, CB4 0EY, UK
Telephone: +44 (0) 1223 755950 - Fax: +44 (0) 1223 755951 - E-Mail: info@abbexa.com

Chromobox Homolog 3 (CBX3) Antibody

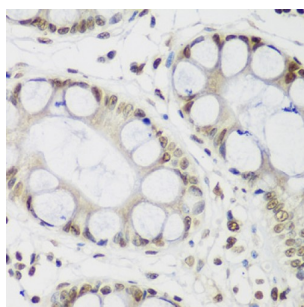
Catalogue No.: abx001835



Western blot analysis of extracts of various cell lines, using CBX3 antibody (abx001835) at 1/1000 dilution.



Immunohistochemistry of paraffin-embedded human lung cancer using CBX3 antibody (abx001835) at dilution of 1/200 (40x lens).



Immunohistochemistry of paraffin-embedded human gastric using CBX3 antibody (abx001835) at dilution of 1/200 (40x lens).

CBX3 Antibody is a Rabbit Polyclonal antibody against CBX3. At the nuclear envelope, the nuclear lamina and heterochromatin are adjacent to the inner nuclear membrane. The protein encoded by this gene binds DNA and is a component of heterochromatin. This protein also can bind lamin B receptor, an integral membrane protein found in the inner nuclear membrane. The dual binding functions of the encoded protein may explain the association of heterochromatin with the inner nuclear membrane. This protein binds histone H3 tails methylated at Lys-9 sites. This protein is also recruited to sites of ultraviolet-induced DNA damage and double-strand breaks. Two transcript variants encoding the same protein but differing in the 5' UTR, have been found for this gene.

Target:	CBX3
Reactivity:	Human, Mouse
Host:	Rabbit
Clonality:	Polyclonal

Abbexa Ltd, Innovation Centre, Cambridge Science Park, Cambridge, CB4 0EY, UK
Telephone: +44 (0) 1223 755950 - Fax: +44 (0) 1223 755951 - E-Mail: info@abbexa.com

Tested Applications: WB, IHC

Recommended dilutions: WB: 1/500 - 1/2000, IHC: 1/50 - 1/200. Optimal dilutions/concentrations should be determined by the end user.

Immunogen: Recombinant fusion protein of human CBX3.

Purification: Affinity purified.

Form: Liquid

Isotype: IgG

Conjugation: Unconjugated

Storage: Aliquot and store at -20 °C. Avoid repeated freeze/thaw cycles.

Molecular Weight: Calculated MW: 20 kDa
Observed MW: 23 kDa

Swiss Prot: [Q13185](#)

GeneID: [11335](#)

Gene Symbol: CBX3

Concentration: > 1 mg/ml

Buffer: PBS, pH 7.3, 0.02% sodium azide, 50% glycerol.

Note: This product is for research use only.