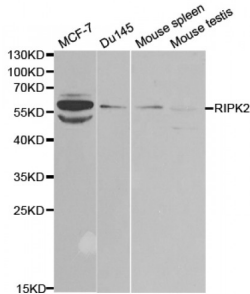


## Receptor Interacting Serine Threonine Kinase 2 (RIPK2) Antibody

Catalogue No.: abx001942



Western blot analysis of extracts of various cell lines, using RIPK2 antibody (abx001942) at 1/1000 dilution.

RIPK2 Antibody is a Rabbit Polyclonal antibody against RIPK2. This gene encodes a member of the receptor-interacting protein (RIP) family of serine/threonine protein kinases. The encoded protein contains a C-terminal caspase activation and recruitment domain (CARD), and is a component of signaling complexes in both the innate and adaptive immune pathways. It is a potent activator of NF- $\kappa$ B and inducer of apoptosis in response to various stimuli.

**Target:** RIPK2

**Reactivity:** Human, Mouse

**Host:** Rabbit

**Clonality:** Polyclonal

**Tested Applications:** WB

**Recommended dilutions:** WB: 1/500 - 1/2000. Optimal dilutions/concentrations should be determined by the end user.

**Immunogen:** Recombinant protein of human RIPK2.

**Purification:** Affinity purified.

**Form:** Liquid

**Isotype:** IgG

**Conjugation:** Unconjugated

**Storage:** Aliquot and store at -20 °C. Avoid repeated freeze/thaw cycles.

**Molecular Weight:** Calculated MW: 45 kDa/61 kDa  
Observed MW: 60 kDa

**Swiss Prot:** [O43353](#)

Abbexa Ltd, Innovation Centre, Cambridge Science Park, Cambridge, CB4 0EY, UK  
Telephone: +44 (0) 1223 755950 - Fax: +44 (0) 1223 755951 - E-Mail: [info@abbexa.com](mailto:info@abbexa.com)

**GeneID:** [8767](#)

**Gene Symbol:** RIPK2

**Concentration:** > 1 mg/ml

**Buffer:** PBS, pH 7.3, 0.02% sodium azide, 50% glycerol.

**Note:** This product is for research use only.