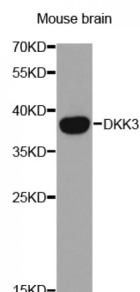


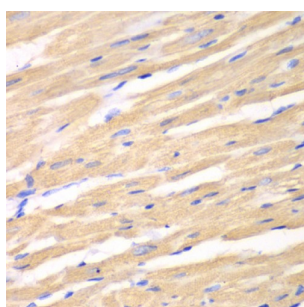
Abbexa Ltd, Innovation Centre, Cambridge Science Park, Cambridge, CB4 0EY, UK  
Telephone: +44 (0) 1223 755950 - Fax: +44 (0) 1223 755951 - E-Mail: [info@abbexa.com](mailto:info@abbexa.com)

## Dickkopf 3 Homolog (Xenopus Laevis) (DKK3) Antibody

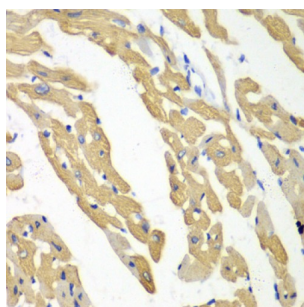
Catalogue No.: abx001967



Western blot analysis of extracts of mouse brain, using DKK3 antibody (abx001967) at 1/1000 dilution.



Immunohistochemistry of paraffin-embedded rat heart using DKK3 antibody (abx001967) at dilution of 1/100 (40x lens).



Immunohistochemistry of paraffin-embedded mouse heart using DKK3 antibody (abx001967) at dilution of 1/100 (40x lens).

DKK3 Antibody is a Rabbit Polyclonal antibody against DKK3. This gene encodes a protein that is a member of the dickkopf family. The secreted protein contains two cysteine rich regions and is involved in embryonic development through its interactions with the Wnt signaling pathway. The expression of this gene is decreased in a variety of cancer cell lines and it may function as a tumor suppressor gene. Alternative splicing results in multiple transcript variants encoding the same protein.

<b>Target:</b>	DKK3
<b>Reactivity:</b>	Mouse, Rat
<b>Host:</b>	Rabbit
<b>Clonality:</b>	Polyclonal
<b>Tested Applications:</b>	WB, IHC

Abbexa Ltd, Innovation Centre, Cambridge Science Park, Cambridge, CB4 0EY, UK  
Telephone: +44 (0) 1223 755950 - Fax: +44 (0) 1223 755951 - E-Mail: [info@abbexa.com](mailto:info@abbexa.com)

**Recommended dilutions:** WB: 1/500 - 1/2000, IHC: 1/50 - 1/200. Optimal dilutions/concentrations should be determined by the end user.

**Immunogen:** Recombinant protein of human DKK3.

**Purification:** Affinity purified.

**Form:** Liquid

**Isotype:** IgG

**Conjugation:** Unconjugated

**Storage:** Aliquot and store at -20 °C. Avoid repeated freeze/thaw cycles.

**Molecular Weight:** Calculated MW: 38 kDa  
Observed MW: 38 kDa

**Swiss Prot:** [Q9UBP4](#)

**GeneID:** [27122](#)

**Gene Symbol:** DKK3

**Concentration:** > 1 mg/ml

**Buffer:** PBS, pH 7.3, 0.02% sodium azide, 50% glycerol.

**Note:** This product is for research use only.